

XS messenger Rollout Manual

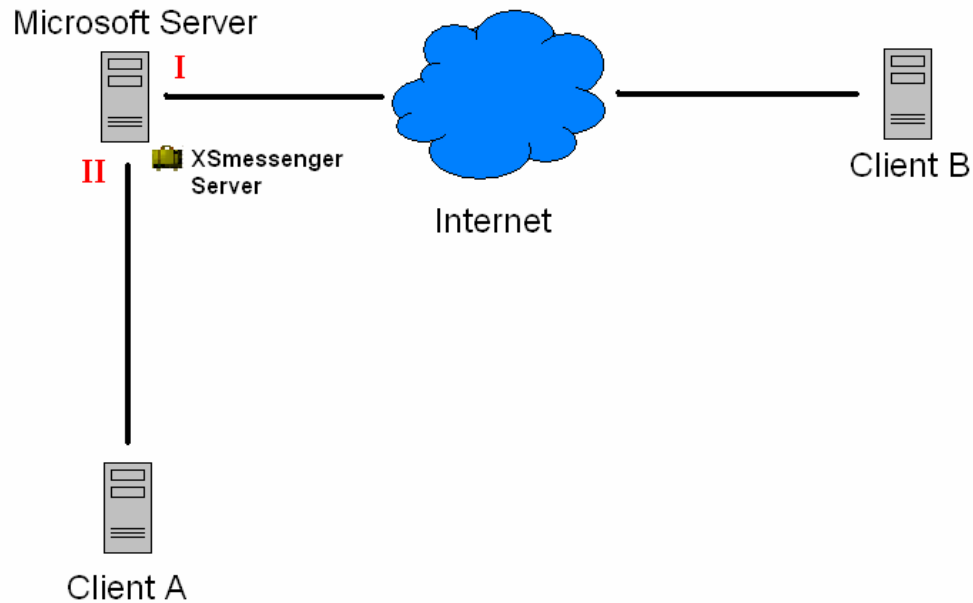
(document version 2.0)

Chapter Index

XSmessage Rollout Manual	1
1. Server installation.....	3
1.1 Installing XSmessage Server.....	3
1.2 Step by step installation	4
2. Client installation	5
2.1 Installing XSmessage Client A (network client).....	5
2.2 Installing XSmessage Client B (internet client).....	5
3. Firewall and router configuration.....	6
3.1 When you use a XSmessage Server hosted by us.	6
3.2 When you have installed your own XSmessage Server	7

1. Server installation

1.1 Installing XSmessenger Server



The following image represents the connection possibilities to XSmessenger. XSmessenger Server can host Local Area Network (LAN) clients and Internet clients simultaneously.

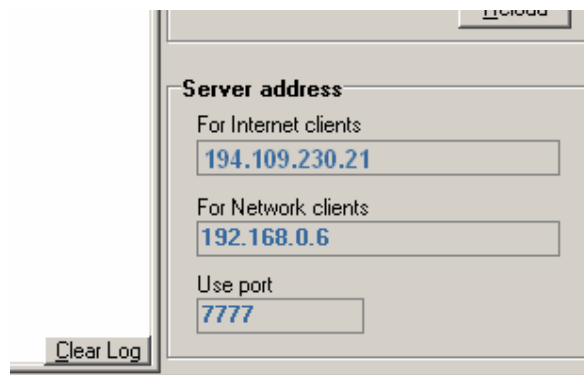
In this document we will try to explain to you how to install your clients as well as installing your XSmessenger Server.

Please take note; in the following image **Client A** is a computer in your LAN environment and **Client B** is a computer connected on the internet.

1.2 Step by step installation

1. Download XSmessenger Server from <http://www.xsmessenger.com>
2. Install XSmessenger Server on your Microsoft Server (any Windows computer).
3. Obtain XSmessenger Server's IP-addresses for:
 - a. Local Area Network (for network clients) (**II**)
 - b. And the Internet (for Internet clients) (**I**)
This address is only required when people have to connect to XSmessenger via Internet.

If XSmessenger Server is able to auto-detect these IP-addresses, they will be displayed.



Write these addresses down. These addresses are needed when you are going to install the clients. *

Please read more info about installation behind firewalls and routers in chapter "Firewall and router configuration" (chapter 3).

4. Start the XSmessenger Server.

XSmessenger Server is correctly configured after installation. Modification of settings are not necessary.

* If you don't know how to obtain IP-Addresses please send us an e-mail (support@xsmessenger.com).

2. Client installation

2.1 Installing XSmessenger Client A (network client)

1. Download the XSmessenger Client from <http://www.xsmessenger.com>
2. Install XSmessenger Client on the Workstation computer.
3. Start XSmessenger Client.
If the client is connecting automatically to our Demo server, please select Exit and then logout, and proceed to step 4
4. Click on CONNECTION button and enter LAN IP-Address (**II**)
in the Server edit box.
5. Click SAVE.
6. Click CREATE USER to create a new user (and Login).

2.2 Installing XSmessenger Client B (internet client)

1. Download the XSmessenger Client from <http://www.xsmessenger.com>
2. Install XSmessenger Client on the Workstation computer.
3. Start XSmessenger Client.
If the client is connecting automatically to our Demo server, please select Exit followed by logout, and proceed to step 4
4. Click on CONNECTION button and enter the Internet IP-Address (**I**)
in the Server edit box^{*}
5. Click SAVE.
6. Click CREATE USER to create a new user (and Login).

^{*} When Client B isn't connected to the Internet via NAT router but uses a PROXY-SERVER to connect to the Internet, enter correct proxy information.

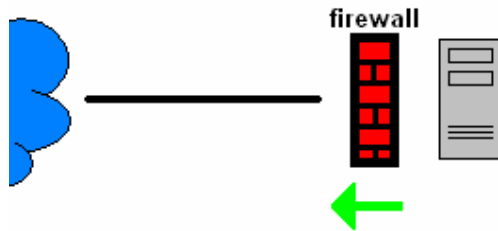
3. Firewall and router configuration

3.1 When you use a XSmessenger Server hosted by us.

Client firewalls

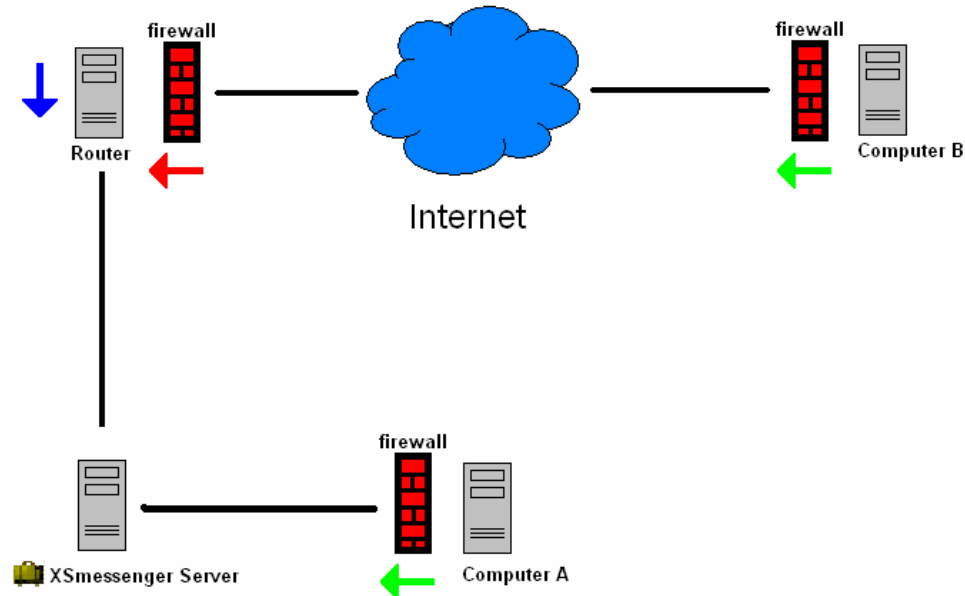
To allow clients to connect to the XSmessenger Server please make sure that all client's firewalls have the ability to make a new outgoing connection directed to the server on the TCP-Port we have provided (marked with the **green arrow**).

Please consult your firewall documentation.



3.2 When you have installed your Private XSmessenger Server

XSmessenger Server will standard listen on TCP-port 7777 (this can be overridden).



Client firewall

To allow clients to connect to the XSmessenger Server please make sure that all client's firewall (computer A and B in this figure) have the ability to make a new outgoing connection directed to the XSmessenger Server on TCP-Port 7777 (marked with **green arrows**).

Tip: We will advice to configure your firewall to accept incoming connection on TCP-Port 7778. This will dramatically improve network speeds.

Please consult your firewall documentation.

Server firewall

The firewall(s) situated before the XSmessenger Server must accept incoming TCP connections on TCP/IP port 7777. (marked with a **red arrow**)

Please consult your firewall documentation.

Server Router

In most cases the XSMessenger Server will be installed behind a router. Routers prevent internet clients to connect the XSMessenger server behind the router directly.

To enable internet clients to connect to this server you will have to tell the router that all incoming connections to port 7777 will be forwarded to the XSMessenger Server. This is called: **port forwarding** (marked with a **blue arrow**).

Please consult your router documentation how to forward incoming internet connections to TCP-port 7777 to your XSMessenger Server (you will need to forward it to it's Local Area Network address).