

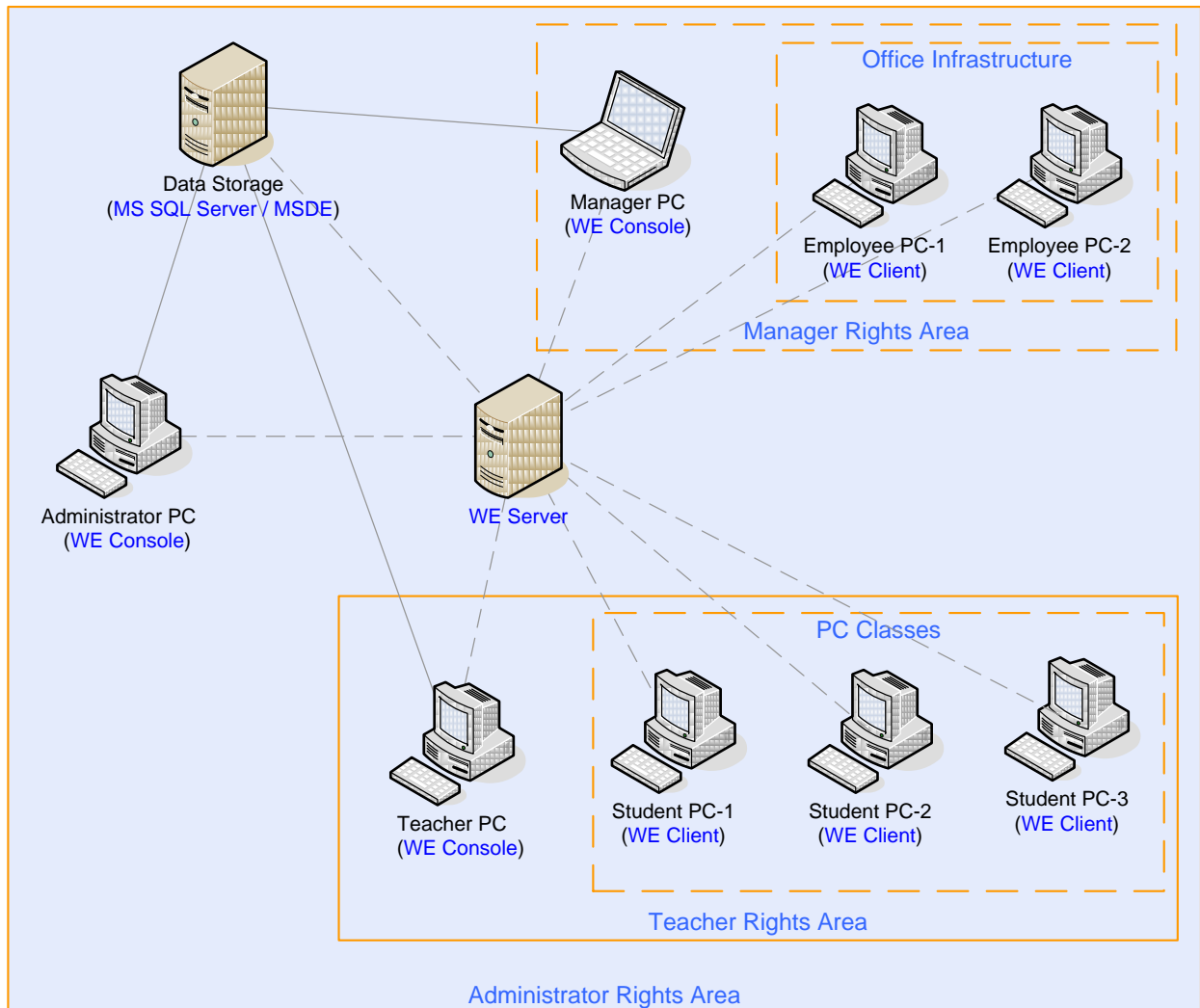
# Getting Started with Work Examiner Professional

---

- 1. About Work Examiner Professional.....2
- 2. Install of Work Examiner Professional system .....3
  - 2.1. Prepare to install Work Examiner Server application .....3
  - 2.2. Installing Work Examiner Server application .....3
    - 2.2.1. Standard installation of WE Server application.....5
    - 2.2.2. Extended installation of WE Server application .....9
  - 2.4. Installing Work Examiner Client application .....14

# 1. About Work Examiner Professional

Work Examiner Professional is a multi-tier solution for computer activity monitoring. It was designed both for small businesses with dozens of PCs and enterprises or universities with thousands of PCs.



Here is a brief description of Work Examiner components:

**WE Client** – client module used for gathering pc usage data directly from the computer it's installed on. Has no UI, but may be installed\uninstalled locally as well as remotely.

**WE Server** – is connected by clients for activity data transferring and some other interaction. Works like a bridge to connect clients, consoles and database.

WE Console – provides full control of all WE components. It supports user authorization. E.g. different users may have access to different PCs (like manager->his department only).

## **2. Install of Work Examiner Professional system**

### **2.1. Prepare to install Work Examiner Server application**

Work Examiner Server requires Microsoft SQL Server (versions 2005 or higher, SQL Express Edition is also supported). MS SQL Server must work in «mixed mode» of security.

WE\_Server.exe installer can itself load and deploy MS SQL Server 2005 Express Edition when choosing «Standard» installation mode (installation modes are described further).

If the installation is not possible or you wish to install MS SQL Server yourself we recommend you to download free version of MS SQL Server 2005 Express Edition (supports MS Windows Vista\Win7, limited to 1Gb of RAM and limit of database of 4Gb) at the address:

<http://www.microsoft.com/downloads/details.aspx?FamilyID=220549b5-0b07-4448-8848-dcc397514b41&displaylang=en>.

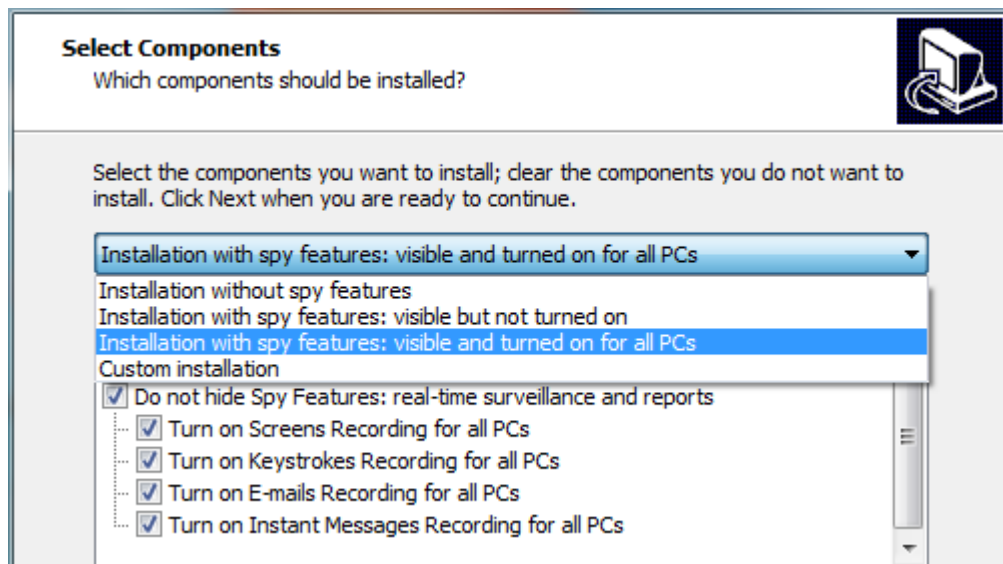
Now you can start installation of Work Examiner Professional system in three steps described further.

### **2.2. Installing Work Examiner Server application**

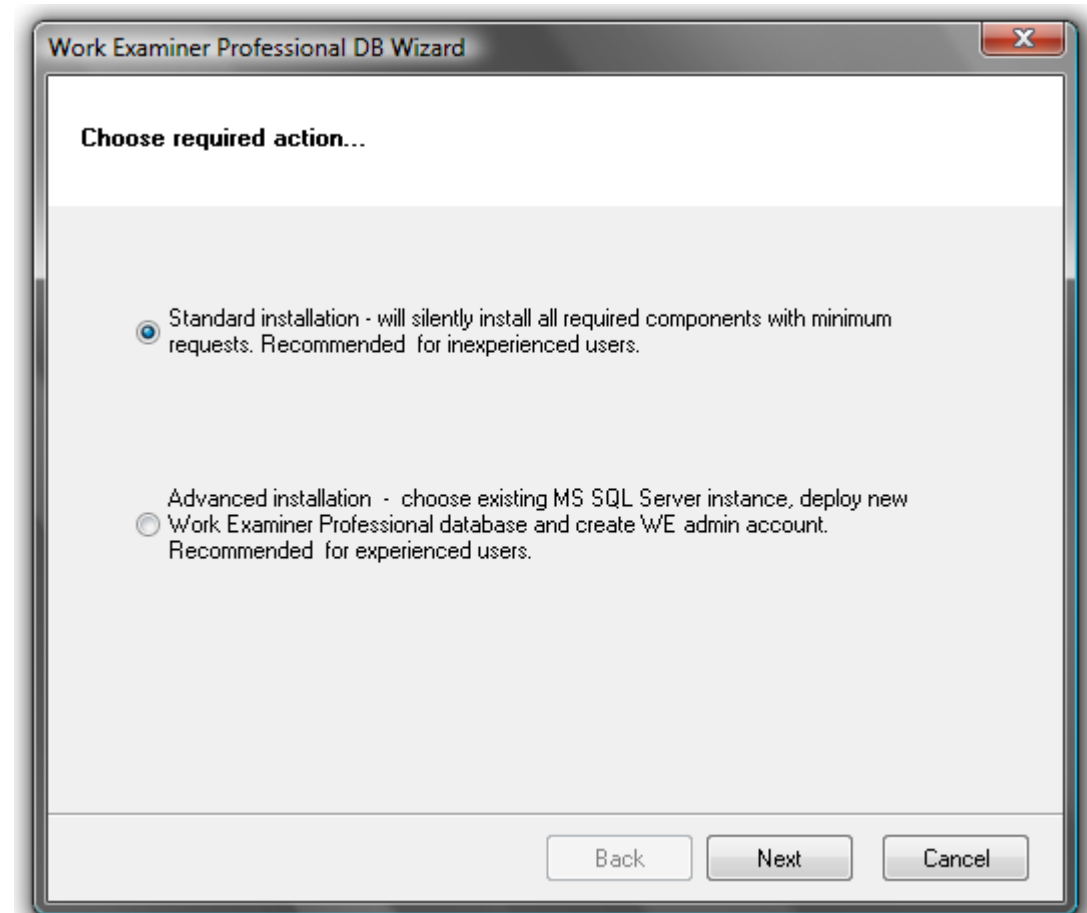
Step-1: you need to install Work Examiner Server application first:

- Run 'WE\_Pro\_Server.exe' and follow installer instructions. Several installation types will be offered

Note: by default Spy features are disabled during the installation. You may choose to enable them on the Select Components step:



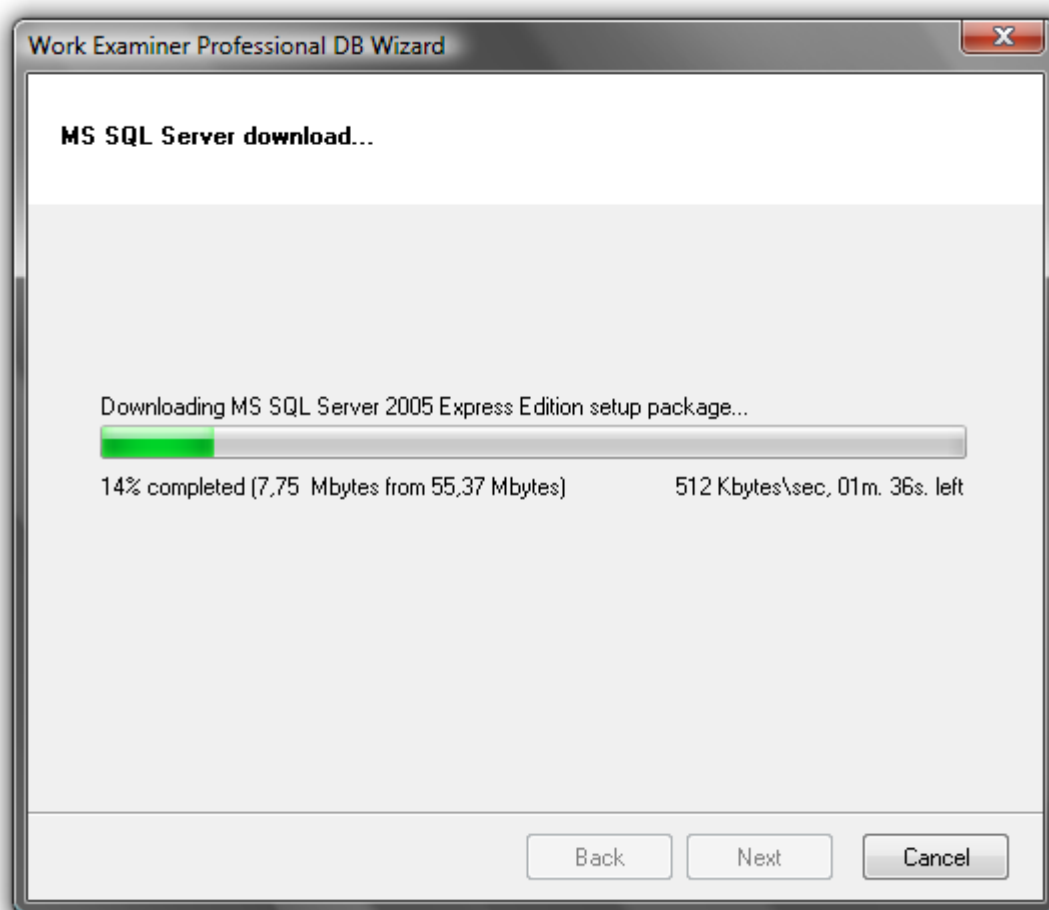
Spy features can be enabled to be visible with recording turned off - to prevent all PCs tracking. You may enable recordings later in Client Options.



- Standard – deployment and configuration of all the necessary components with minimum of requests. Recommended for inexperienced users.
- Extended – Select an existing MS SQL Server, installing new database and creation of Work Examiner administrator account. It is recommended for advanced users.

### 2.2.1. Standard installation of WE Server application

When you choose a standard installation the installer will download MS SQL Server 2005 Express Edition software from the official site of the manufacturer. SQLEXP.R.EXE file will be saved in WE Server installation folder (by default C:\Program Files\Work Examiner Professional Server). In case of problems with downloading a file, it is recommended to delete it so that the program download it again (otherwise the installer will attempt to run the "broken" file), because if SQLEXP.R.EXE is present the installer will not download it again, and immediately proceed to install MS SQL Server. Therefore, in the absence of Internet access you can place your SQLEXP.R.EXE to WE Server folder downloaded manually from the official site of Microsoft: <http://download.microsoft.com/download/e/a/4/ea4b699b-bec4-4722-96d3-254580ed7f9e/SQLEXP.R.EXE>

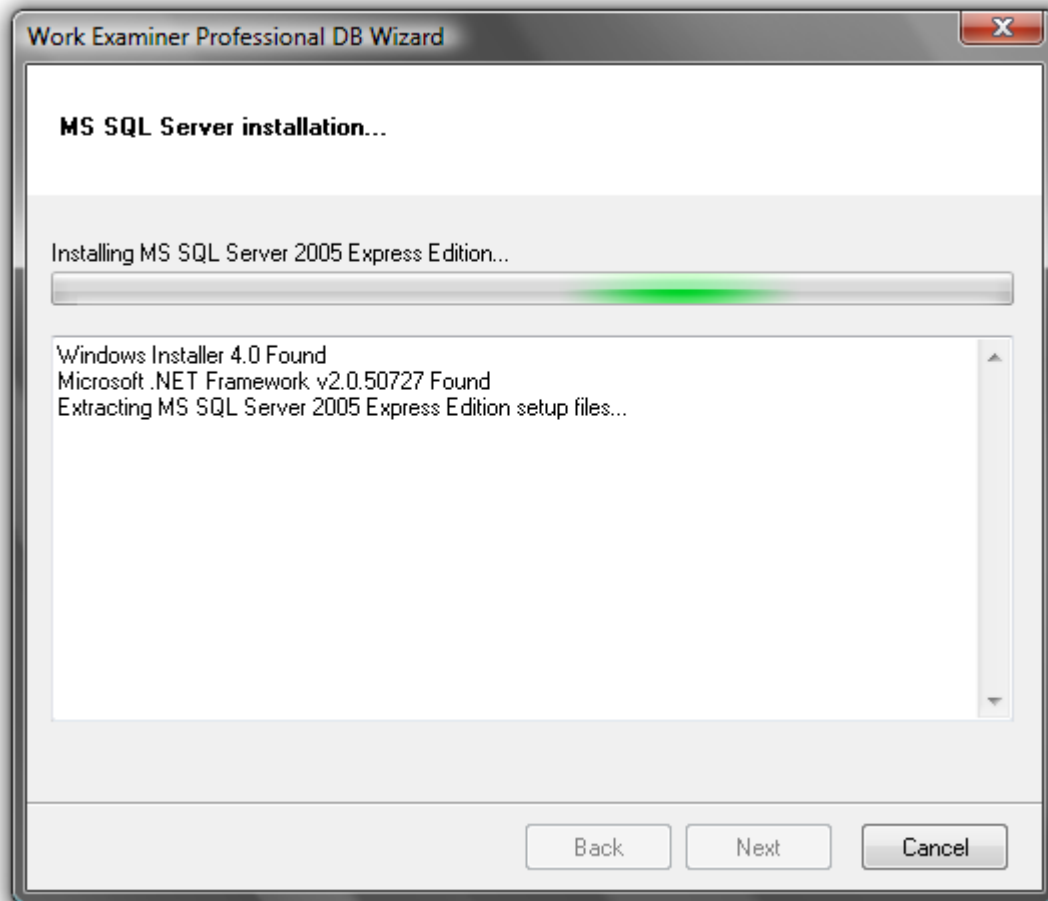


Further downloaded MS SQL Server distribution package will be installed with the following parameters:

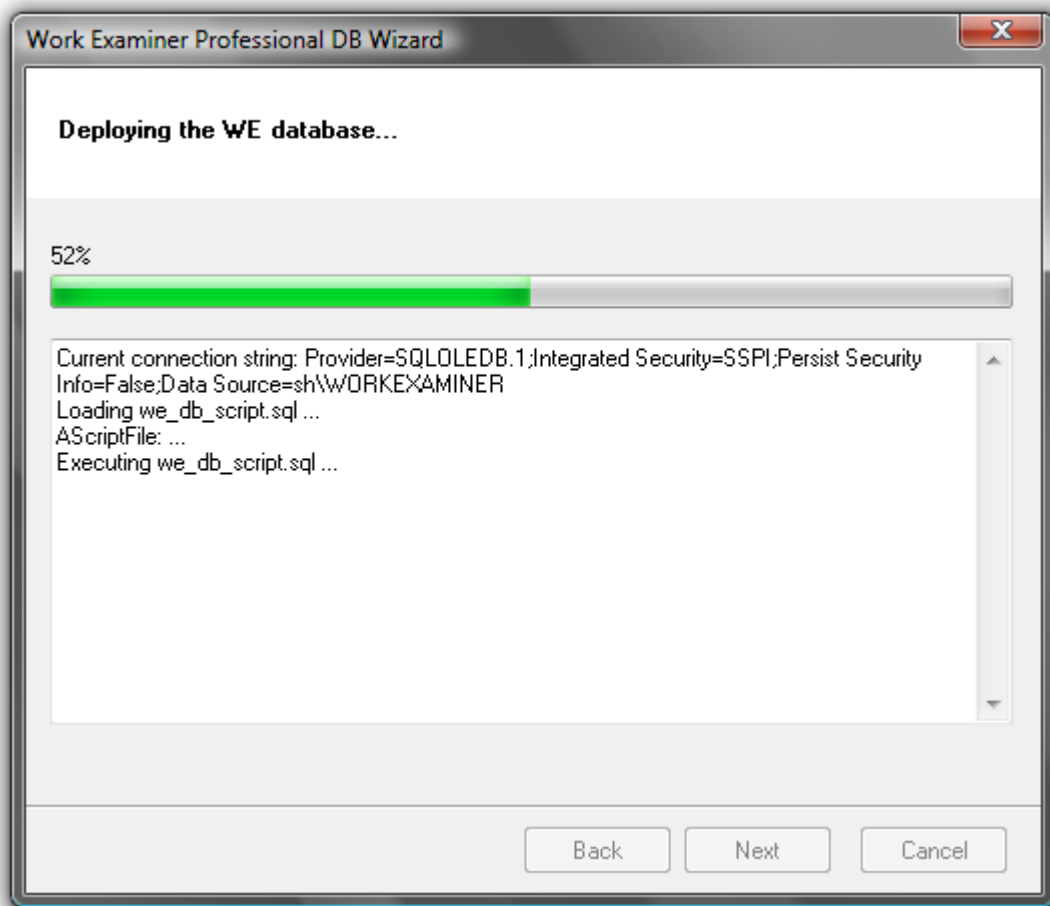
- Instance name: WORKEXAMINER

- Authentication mode: mixed (windows and sql)
- SA password: WorkExaminer\$123

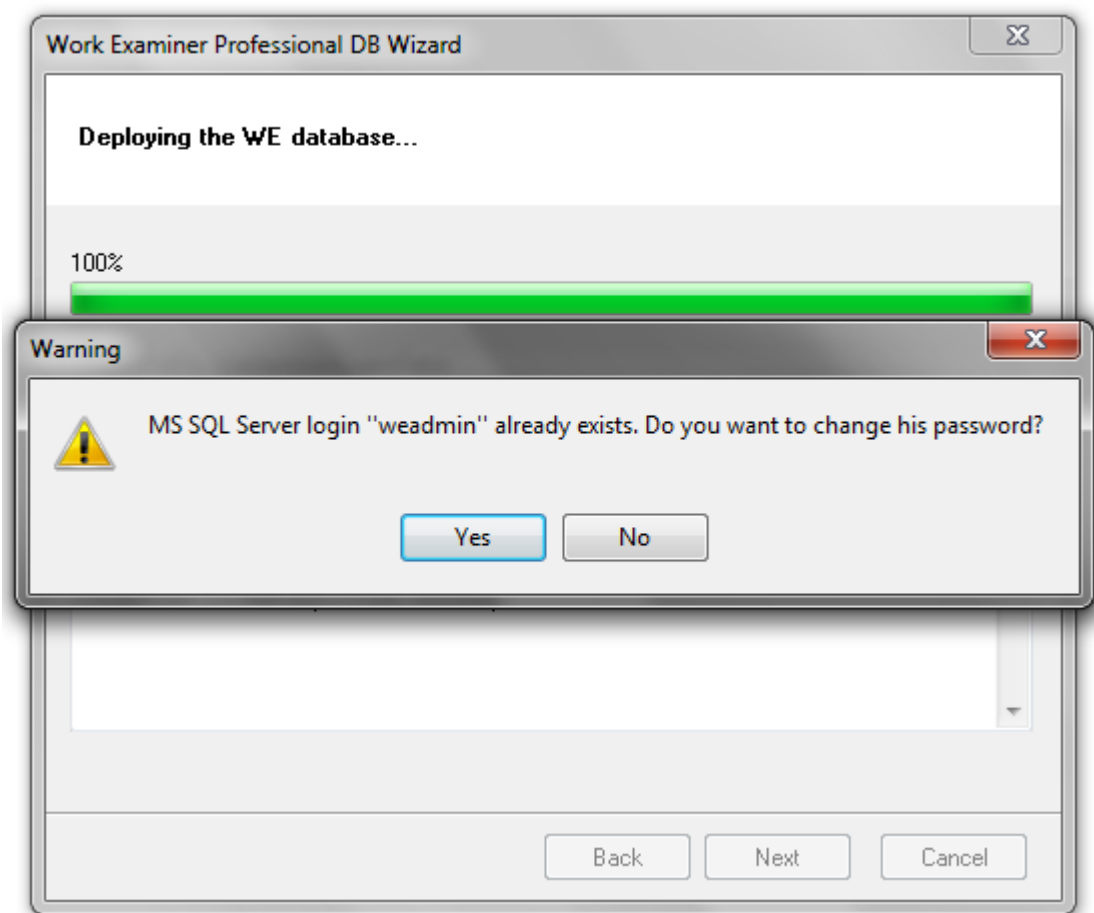
Other options will be preserved by default.



Then database of Work Examiner Professional system will be deployed.

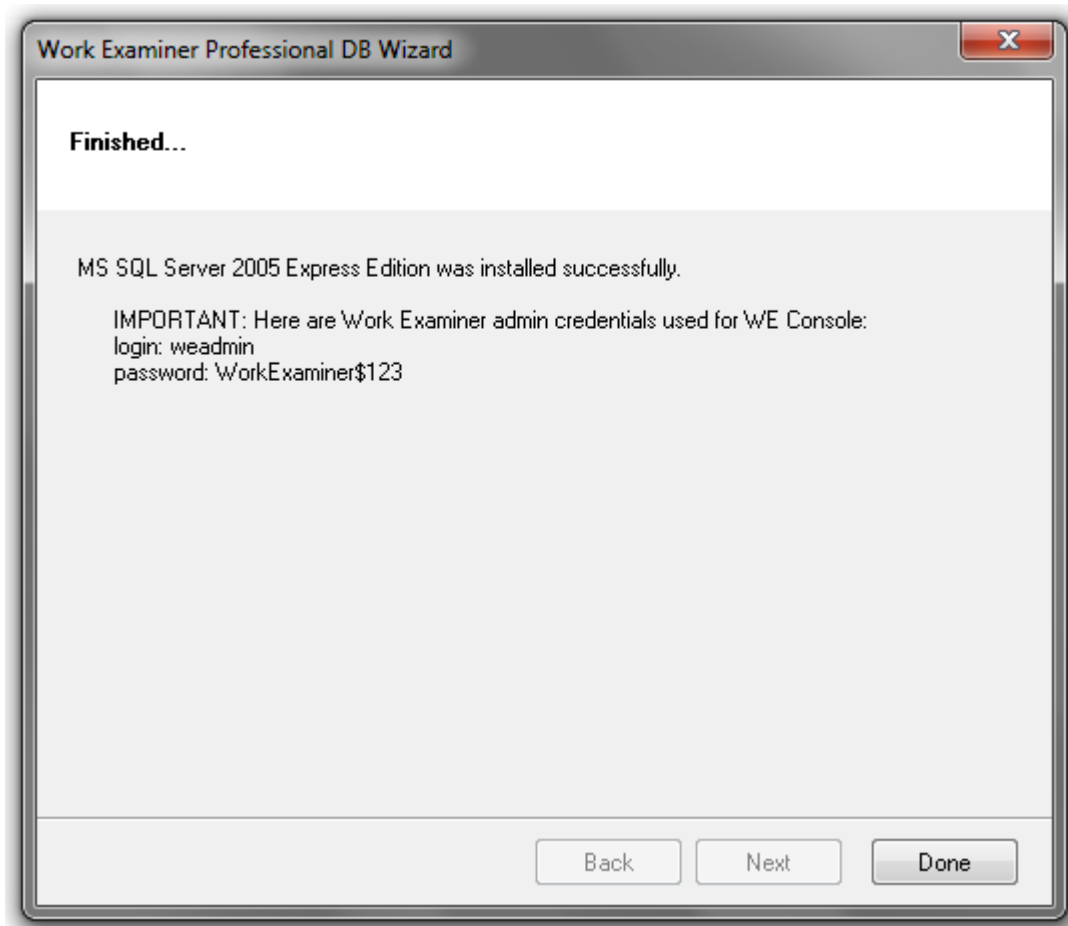


After installing the database the user-administrator of System Work Examiner Professional system will be created with login "weadmin" and password "WorkExaminer\$123". If such user already exists in the database, the request will appear to change the password:



At the end of the installation you'll see important information needed to enter WE Console – administrator WE login and password created automatically. Default system administrator login – "weadmin", password - " WorkExaminer\$123".





### 2.2.2. Extended installation of WE Server application

Extended installation of WE Server application presupposes the existence in the network or on the computer deployed and working MS SQL Server 2000/2005 software with the authentication mode «mixed authentication mode (windows and sql)». The user running the setup program should have the administrator rights of the MS SQL Server.

First step will require setting the Database server – full path to a copy of your MS SQL Server. Please note that instances of the MS SQL Server other than the standard installed are specified as [server name]\[instance name]

The screenshot shows a Windows-style dialog box titled "Work Examiner Professional DB Wizard". The main heading inside is "MS SQL Server connection properties...". Below this, there are two sections: "Specify database settings" and "Specify the authentication mode".

**Specify database settings**

Database server: SERVER1\WORKEXAMINER

Database name: WE

**Specify the authentication mode**

☐ Use Windows account information

☒ Use SQL Server authentication account

User name: sa

Password: [masked with asterisks]

At the bottom right, there are three buttons: "Back", "Next", and "Cancel".

Then you must create an account of Work Examiner Professional system administrator, which will be used to log into WE console. If the selected account already exists in MS SQL Server database installation wizard will offer to change the password to new or leave it unchanged.

The screenshot shows a Windows-style dialog box titled "Work Examiner Professional DB Wizard". The window has a standard title bar with a close button (X) in the top right corner. The main content area is divided into two sections. The top section is titled "Work Examiner administrator credentials..." and is currently empty. The bottom section is titled "Creating Work Examiner administrator account" and contains three input fields. The first field is labeled "User name" and contains the text "admin". The second field is labeled "Password" and contains six asterisks "xxxxxx". The third field is labeled "Password confirmation" and contains six asterisks "xxxxxx". At the bottom of the window, there are three buttons: "Back", "Next", and "Cancel".

Work Examiner Professional DB Wizard

Work Examiner administrator credentials...

Creating Work Examiner administrator account

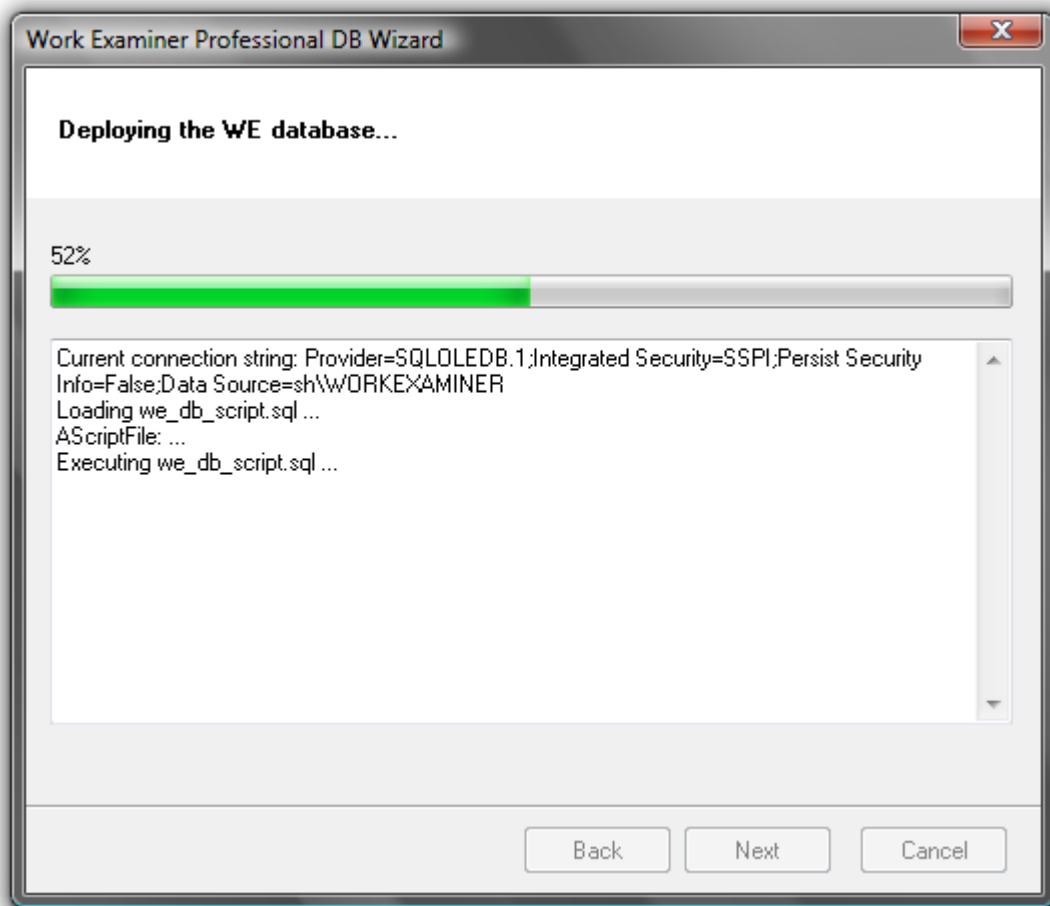
User name: admin

Password: xxxxxx

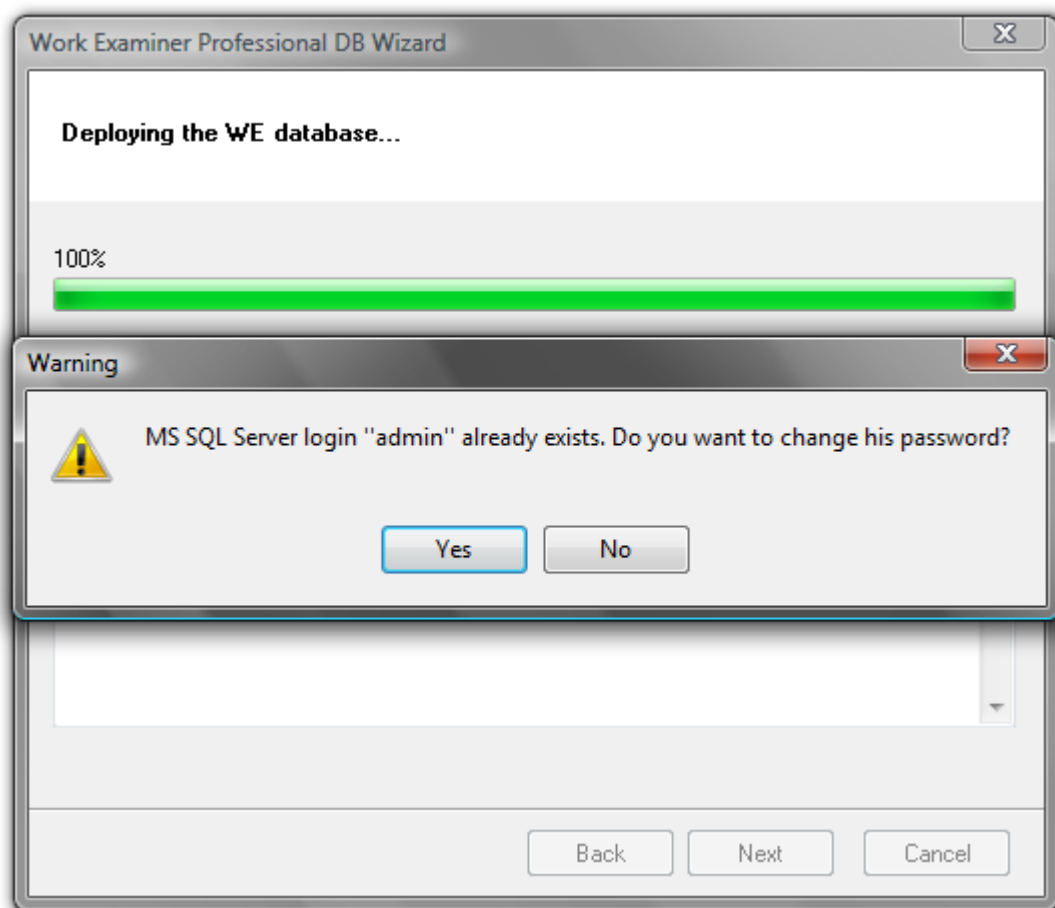
Password confirmation: xxxxxx

Back Next Cancel

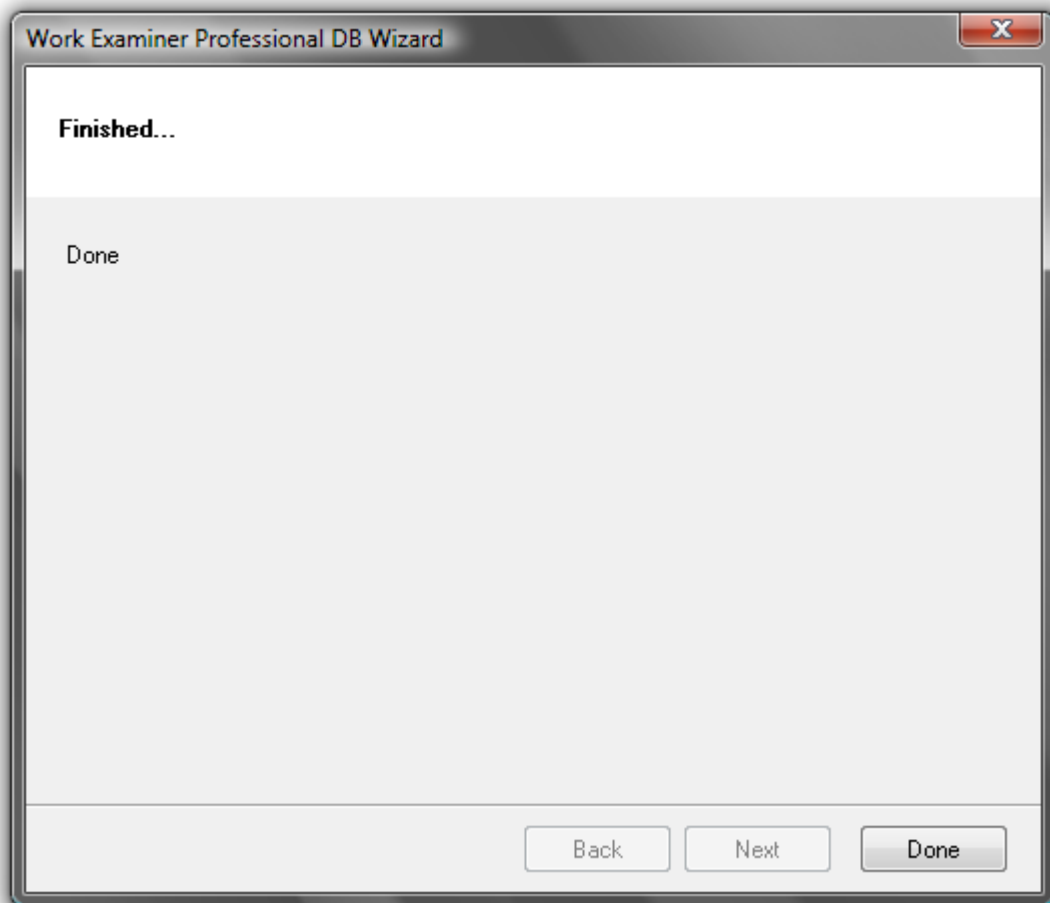
Then Work Examiner Professional database will be deployed with parameters set before (database server, database name, user authentication mode).



After installing the database a user-administrator of Work Examiner Professional system is created with login and password that you specified earlier. If such user already exists in the database, the request will appear to change the password:



WE Server application installation is complete; you can start installing WE Console application.



### *2.3. Installing Work Examiner Console application*

#### Step-2: Installing Work Examiner Console

- Run 'WE\_Pro\_Console.exe' and follow the instructions of installer.
- Run WE Console, connect to WE Server. While connecting to WE Server enter login and password which you set during installation of WE Server application.
- Now you can install WE clients remotely, manage other system users (e.g., create managers), group users of your company etc.

Now you are ready to install clients.

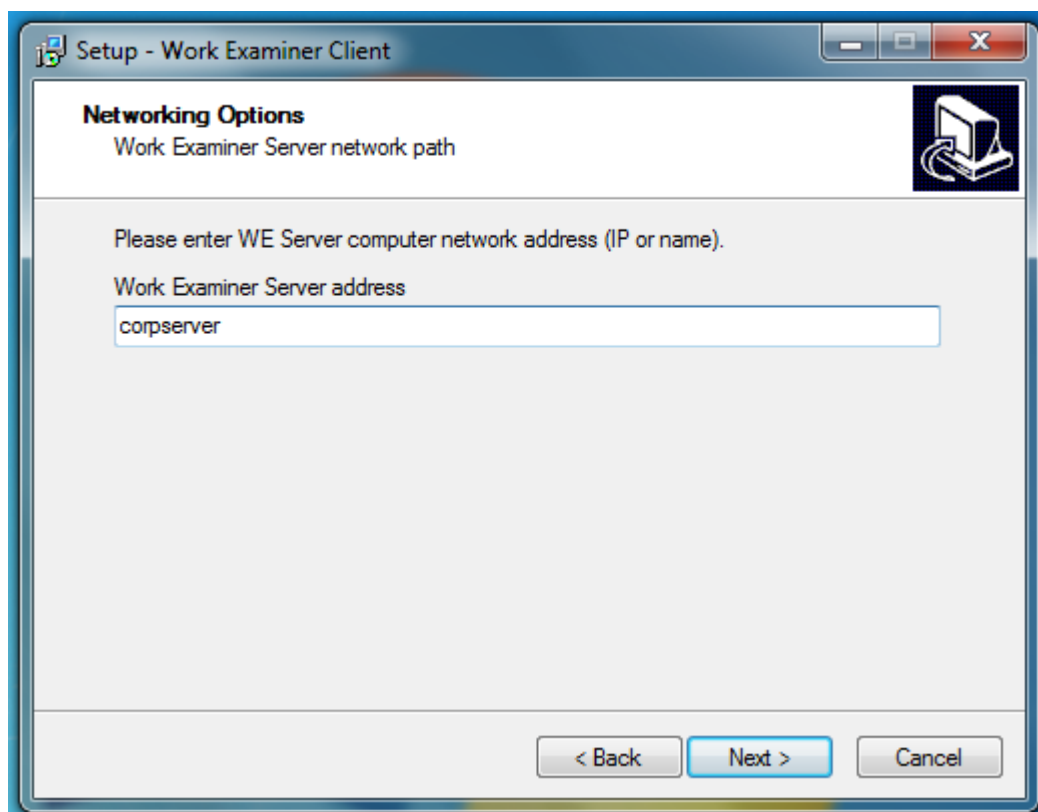
### **2.4. Installing Work Examiner Client application**

You can install clients remotely – from console – or locally – from WE\_Client.exe distribution package.

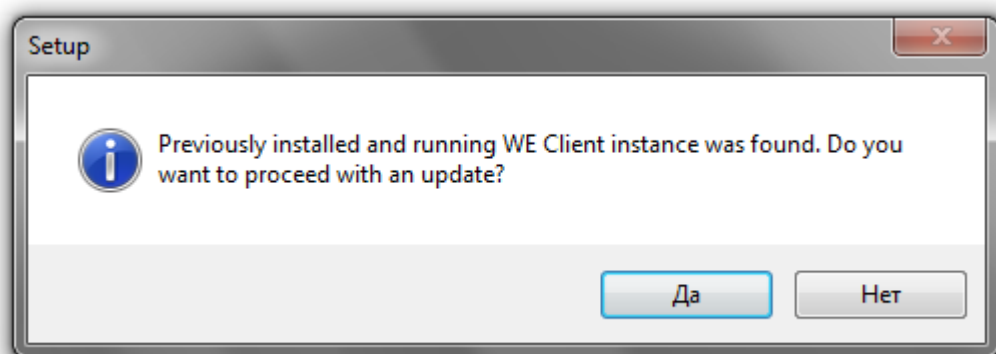
## Locally

Local client installation is optional because it is needed only when you have no admin rights on remote PC and remote client deployment is impossible.

Installation from WE\_Client.exe will require to fill in WE Server computer's name (or IP address), other steps are formal.



If you install WE Client over the old version, the setup program will ask for update confirmation.

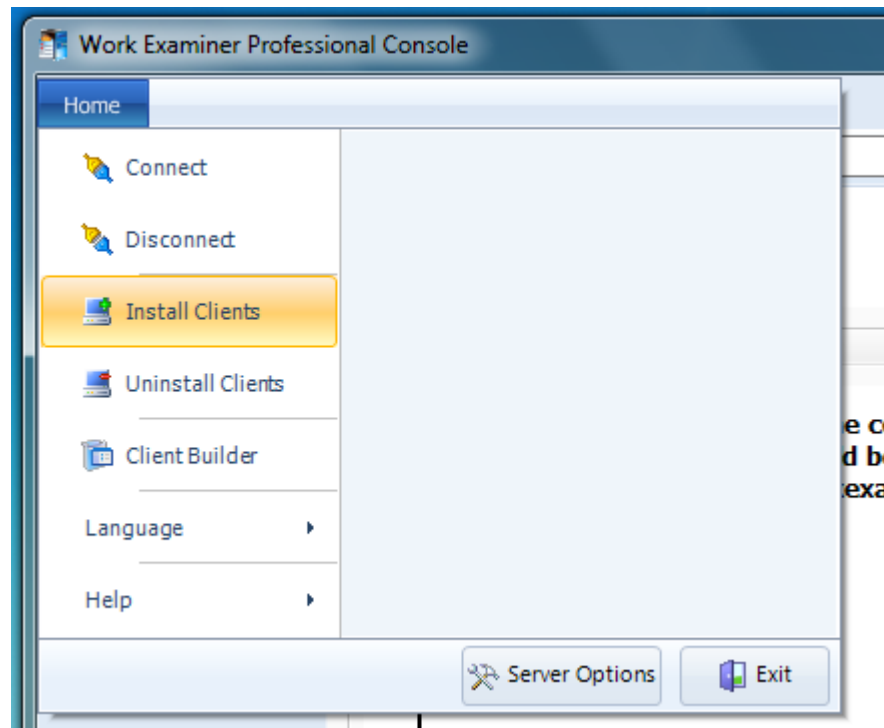


If old version is installed in a folder different from c:\Program Files\WE\_Client\ - setup will ask for WE Client's folder path.

## Remotely

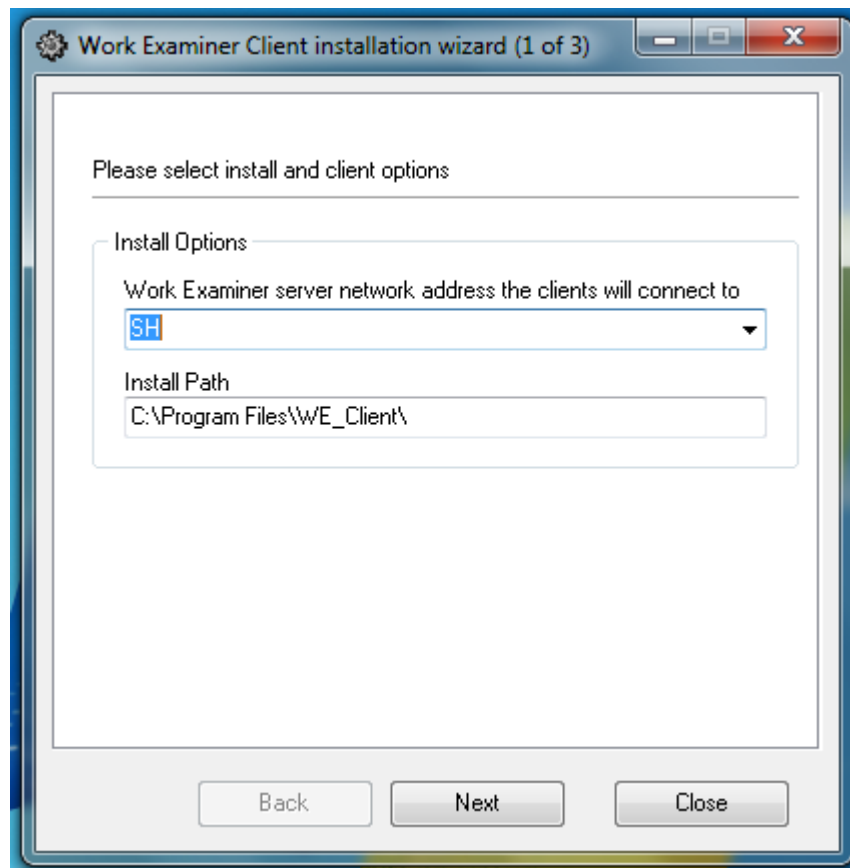
Remote installation requires administrative rights on those computers, where clients will be installed (to check permission rights on the selected computer, click 'Start' then choose 'Run ...', write \[Remote\_Computer\_Name]\admin\$, and press Enter) .

For remote installation of Work Examiner Client application select 'Home -> Install Clients' in main menu of WE Console application.



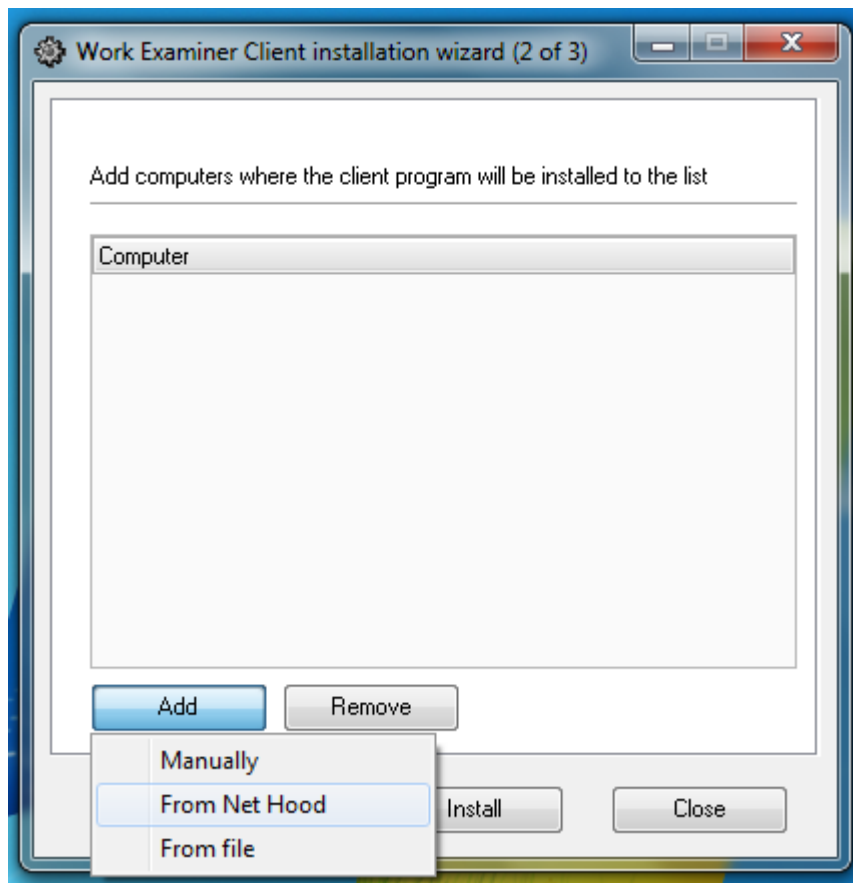
WE Clients installation wizard will appear:





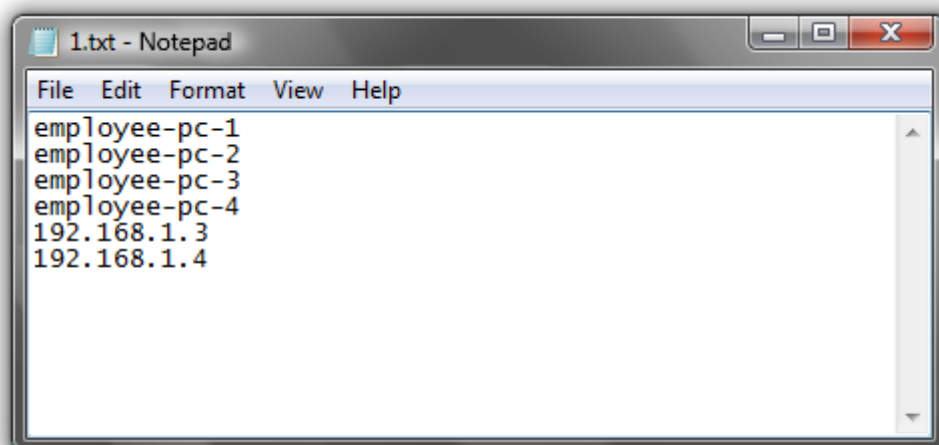
Here you may specify the following parameters:

- Server address of Work Examiner Server computer (the default is server name, to which Work Examiner Console is currently connected);
- Folder where clients of Work Examiner Professional system will be installed;
- List of computers that require WE clients installation.

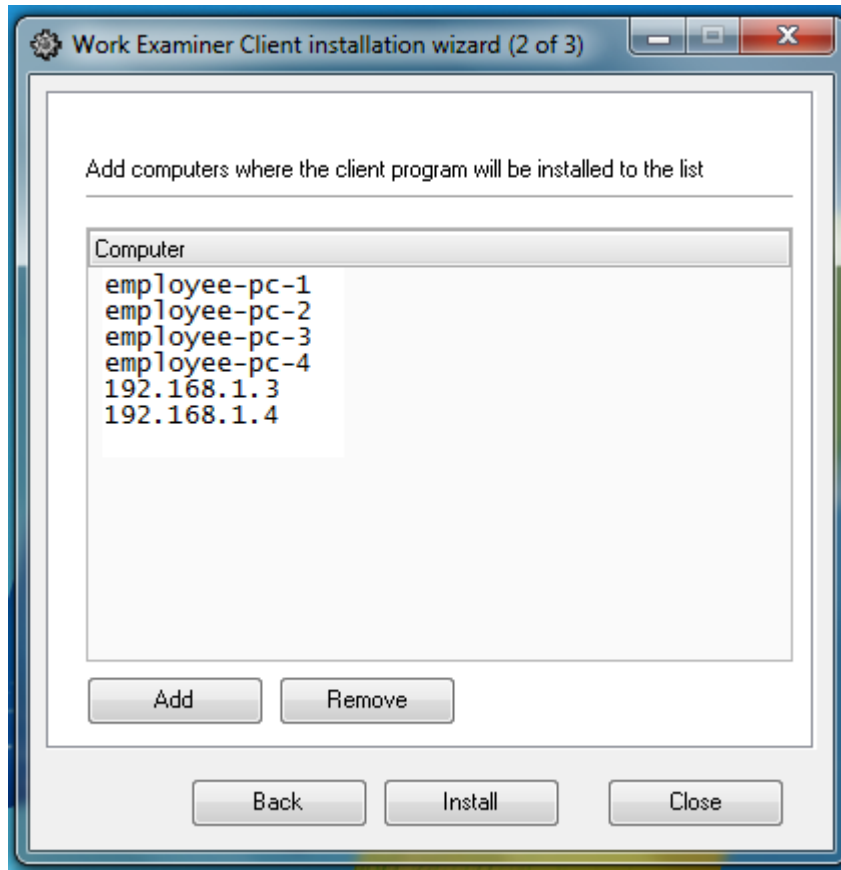


You can form the list of computers at this stage in several ways: add computer names manually, use built-in capability of Network Environment explorer, as well as by importing a list of computers from file.

File should contain a list of computers (in form of computer name or its IP-address).



After selecting a file containing list of computers, the wizard will check access rights to each of them and add them to the list for clients' setup.



After successful completion of remote installation of client the computers with installation should appear in Monitoring section within 30-60 seconds.