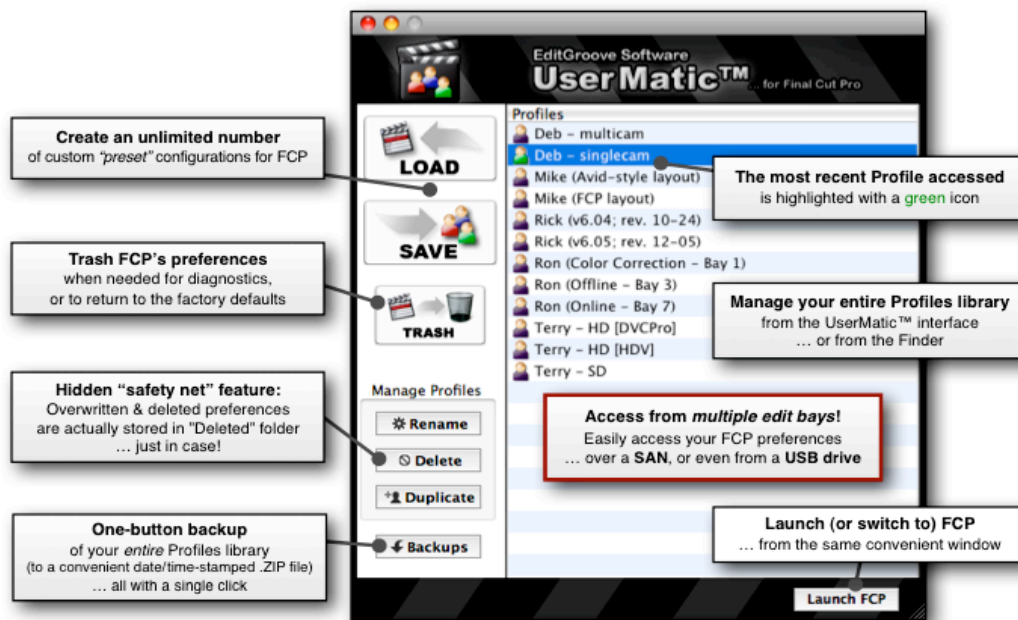


Thanks for checking out **UserMatic™**!

UserMatic™ allows you to save an unlimited number of different “profiles” for your FCP preferences/configurations.

Included in **each** profile is a *complete set* of your:

FCP User Preferences, System Settings, Audio/Video settings, choice of Easy Setup, Favorite Effects, Keyboard Layout(s), Button Bar(s), Window Layout(s), and more.



QUICK START

Before anything else, **Copy** UserMatic™ to your **Applications** folder. Now:

Step 1:

- Run **UserMatic™**, and click **“Launch FCP”**. Customize Final Cut Pro as desired. When you’re through, **Quit FCP**.

Step 2:

- To save that Final Cut Pro configuration as a UserMatic™ “profile”, click **Save**. Then, give the profile a name. (A person’s name, the date, and/or description of that configuration is helpful.)

Note: To make new UserMatic™ profiles, repeat Steps 1 and 2.

Step 3:

- To Load a UserMatic™ profile into Final Cut Pro, select that profile — then click the “LOAD” button.

Step 4:

- To run Final Cut Pro, click “Launch FCP”. The configuration you Loaded will appear in FCP. (UserMatic™ goes into standby mode while FCP is active. To save or change profiles again, first Quit FCP.)

Note: Final Cut Pro always remembers its most recent configuration on its own. Thus, you only *have* to use UserMatic™ to save or restore a configuration (or manage them). However, using UserMatic™ to “Launch FCP” as a normal routine is a helpful workflow.

~~~~~

To “trash” Final Cut Pro’s preference & cache files (and thus, return FCP to its factory default configuration):

- Click **Trash**.

~~~~~

Lots more info in the PDF User Guide, and at **www.EditGroove.com**

Best wishes from your friends at **EditGroove Software** — *helping you stay in the groove!*