

STOCK Live ! : *simplest Indian Stock Market monitoring software*

STOCK Live Professional Edition is with following features:-

- **BACKFILL data** to AmiBroker Chart (1-min & 5-min data for 1 day & 5 days respectively .
- **Live Data feeding** to **Ami Broker Chart**
 - i) Synchronize Stock Live's Watchlist Stocks with AmiBroker
 - ii) Start & Stop option iii) Live Stock quotes for Ami Broker
- Option to refresh data & AmiBroker Chart even at very fast rate (10-15 sec)
- **EOD Data** in CSV format
- **Live Data** in CSV format
- **Intraday Data** in CSV format
- **Future Contracts Data** (it is no more available for Stock Live Standard Edition)

PLUS Following features ::

>> **STOCK TICKER BAR** by clicking “_” button

(1) **LIVE CHARTING**

(2) Realtime Stock **Profile Management**

(3) **Watchlist** with Realtime Stock Quotes

(4) **Indian Market Indices**

(5) **International Market** , Indian ADRs & USD – INR

(6) Volume & Turnover **Toppers**, Top gainers

(7) **Historical Chart** by double clicking the stocks

(8) **Pop Up Alerts** in Watchlist

(9) Export the Data to **CSV** format . CSV data for Profile is in Printable form.

(10) **Excellent GUI** , remain always at the top of all other windows applications and minimizes to system tray tool

(11) Position the SW anywhere on the desktop **dragging** with mouse

@@

System Requirements

Operating System Supported :: **Windows XP/2K**

Intel Pentium 1.0 GHz or higher

1 GB RAM or Higher

80 GB HDD (total) or Higher

256 color graphics card (high color recommended)

Screen Resolution :: 1024 X 768 or Higher

Internet type :: Broadband

Internet Speed :: 256 Kbps or higher

@@

STOCK LIVE TroubleShootings

(1) You feel that StockLive is not REFRESHING its data even in Toppers

Solution:: Change these settings ::

Internet Explorer > Tools > General Tab > Settings >

Choose "Every visit to the page " in check for newer versions of stored pages .

(2) Your Screen size is smaller and you are not able to see StockLive fully

Solution :: Increase resolution of your monitor . Right click on the main window and reposition the stock live at TOP CENTER

(3) Stock Live is hanging or delaying in response.

Solution:: This is due to late response of your internet connection .
Right Click on the Main window and in "My Internet Speed" select "Low"

(4)BSE(Sensex) Data starts updating after 10:10 AM.Why ?

Ans::This is Yahoo Data server limitation . NSE is realtime and BSE is 15 min late of its realtime. So can't avoid this.

(5) You are getting NSE data somewhat late of realtime .Why ?

Solution ::Keep yourself Logged-in in <http://finance.yahoo.com> .

(6) Some Stocks I want to add and I am not finding it in the list . How to add a Stock which is not in the list ?

Solution :: Suppose you want to add Reliance Power & Future Capital .

Reach to the Watchlist ("W" button)

>>Click on Add

>>On Popped up Dialog , click on Add New Listing

>>In Company Name ,

Company Name- Reliance Power Ltd

NSE Name- RPOWER

BSE Name- 532939

>>Click on Validate and then Add . That's All

Same Steps For

Company Name- Future Capital

NSE Name- FCH

BSE Name- 532938

Same steps for any new stocks , in case you don't know the NSE & BSE name , after writing company name , click on Find Symbol and write NSE & BSE name and then validate .

(6) How to use Stock Live Pro 1.0.0 or above version , if I am already using Stock Live 5.0.0 or lower version ?

Solution:: At present , Stock Live Pro and Stock Live Standard versions differ in there Database. Follow the below steps ::

> Uninstall the existing Stock Live Standard version .

> Take the backup of C:\StockLive\Companylist.mdb and delete C:\StockLive folder.

> Now new Companylist.mdb will be created in C:\StockLive .

> Open the older CompanyList.mdb which you have already taken backup and import "Future" & "SelectedFuture" tables in it

from C:\StockLive\Companylist.mdb (newly created) and save it.

> Now place the new companylist.mdb as C:\StockLive\Companylist.mdb

In this way you will not loose your existing Profile & watchlist while upgrading your Software from Standard to Professional version.

(7)While starting Stock Live Pro version , I am getting error message "SORRY !!! Problem with COM DLL!!! AmiBroker related functionality will not be available without proper installation of this DLL" . What to do ?

Ans::This means that C:\StockLive\prjdll.dll is not Registered . Follow below steps ::

> Close both AmiBroker & Stock Live Pro .

> Start > Run ... Type "regsvr32 C:\StockLive\prjdll.dll" and press Return key .

> You will get message " DllRegisterServer in C:\StockLive\prjdll.dll succeeded"

Now you will not get the above error while starting Stock Live.

(8) Through "AB" button I am not able do Synchronize,Delete All operations . Even Stock Live is not fetching data to AmiBroker.

What to do in this case ?

Solution :: Make sure that you don't get Error message while starting Stock Live Pro as mentioned in (7).

> Before starting Stock Live Pro , make sure that Ami Broker database is configure for Tick. For this follow below steps :

i) Extract "C:\StockLive\AmiBrokerDB\ExtractHere.zip" in the same path

ii) In AmiBroker, "File > Open Database" and give "C:\StockLive\AmiBrokerDB" as the database path.

> Make sure that First AmiBroker is starts running and then after Stock Live is started.

> Make sure from Task Manager that not more than ONE instance of "Broker.exe" is running

If more than one instance is running , use "Kill All Instances of AmiBroker" button and then close Stock Live

Start AmiBroker first and then run Stock Live

> Whenever you do any operation Add/Delete operation in WatchList , make sure that you Synchronize in AB after that.

(9) Why I am getting this type of Chart in AmiBroker as shown in the following fig i.e. sometimes Close Price a Tick data is not aligned with open price of next Tick data.**What to correct this ?**

Solution :: This occurs due to Lower System configuration at your side, low internet speed or heavy loading of Stock Live . Means Stock Live is added with 30-40 stocks which is then trying to do all its own operations together with feeding data for all stocks to AmiBroker within 15 secs . Sometimes for this operation more than 15 sec is required , so for next cycle data feeding is cancelled.

To get rid of this , it is recommended to have high system configuration , high internet speed and light loading of Stock Live while using AmiBroker data feed . One thing you can also do that Right Click on "Nifty" data grid and Choose "My Internet Speed" as "LOW" .



Important Steps to follow while you start using Stock Live Pro

ALWAYS FIRST START AMIBROKER THEN STOCK LIVE PRO AND WHILE CLOSING FIRST CLOSE STOCK LIVE AND THEN AMIBROKER

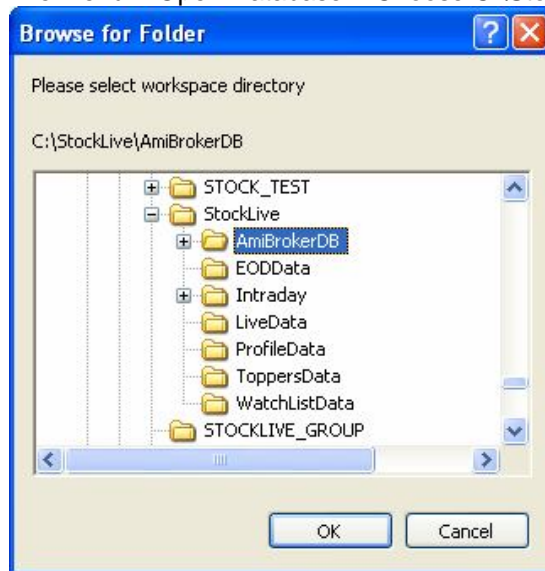
- (1) Whenever you Add or Delete any stock in Stock Live's Watchlist , do remember to STOP AmiBroker (AB) data feeding .

Do remember to Sync your PC/Laptop Clock with Indian Share Market Time.

- (2) Setting up AmiBroker Database compatible with StockLive

Option-A

- Open C:\StockLive\AmiBrokerBD
 - Extract ExtractHere.ZIP file in the same folder
 - Open AmiBroker
- File Menu > Open Database > Choose C:\StockLive\AmiBrokerBD



File Menu > Database Settings

It should look like following dialogue



Database settings

AmiBroker database maintains information about symbols, industry groups, watch lists. It is necessary even if you are using external data source.

General

Database folder:
C:\StockLive\AmiBrokerDB Browse...
Create

Data source

Data source: (local database) ▼

Local data storage:
☒ Enable (recommended)
☐ Disable

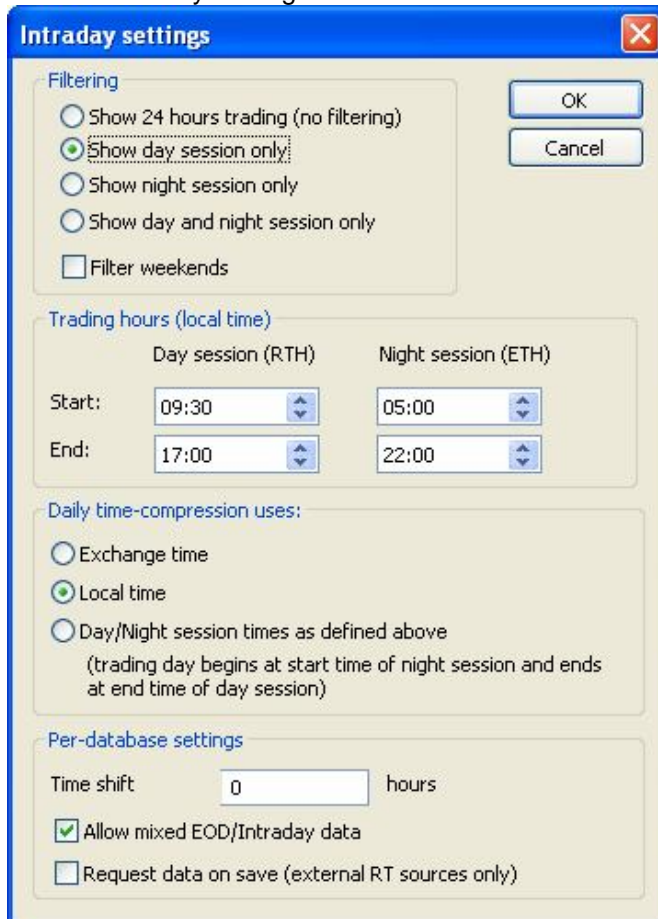
Number of bars:
(260 daily bars is about one year worth) 343200 (approx. 0 days, 10725 KB per symbol)

Base time interval: Tick ▼

Flush cache Intraday settings Configure

OK Cancel

Click on Intraday Settings button



Intraday settings

Filtering

☐ Show 24 hours trading (no filtering)
☒ Show day session only
☐ Show night session only
☐ Show day and night session only
☐ Filter weekends

OK Cancel

Trading hours (local time)

	Day session (RTH)	Night session (ETH)
Start:	09:30 ▲▼	05:00 ▲▼
End:	17:00 ▲▼	22:00 ▲▼

Daily time-compression uses:

☐ Exchange time
☒ Local time
☐ Day/Night session times as defined above
(trading day begins at start time of night session and ends at end time of day session)

Per-database settings

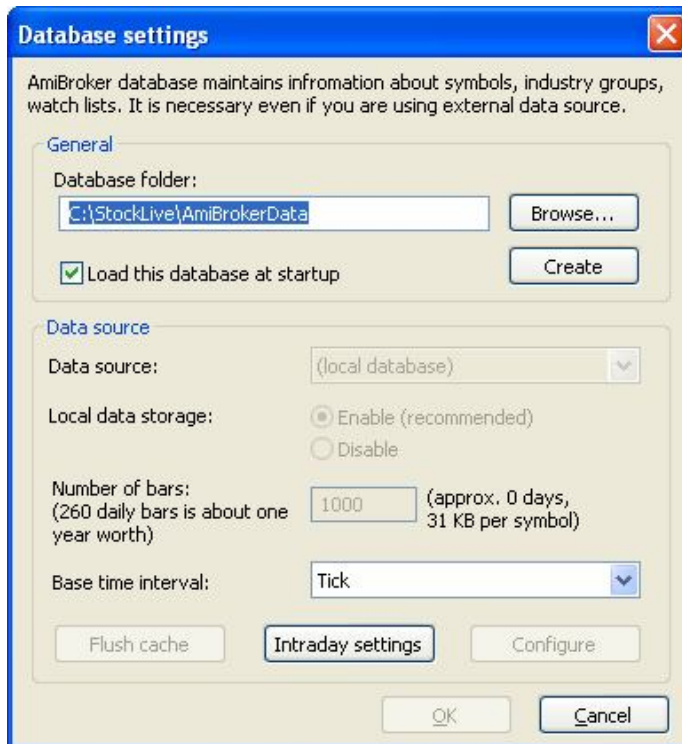
Time shift 0 hours

☒ Allow mixed EOD/Intraday data
☐ Request data on save (external RT sources only)

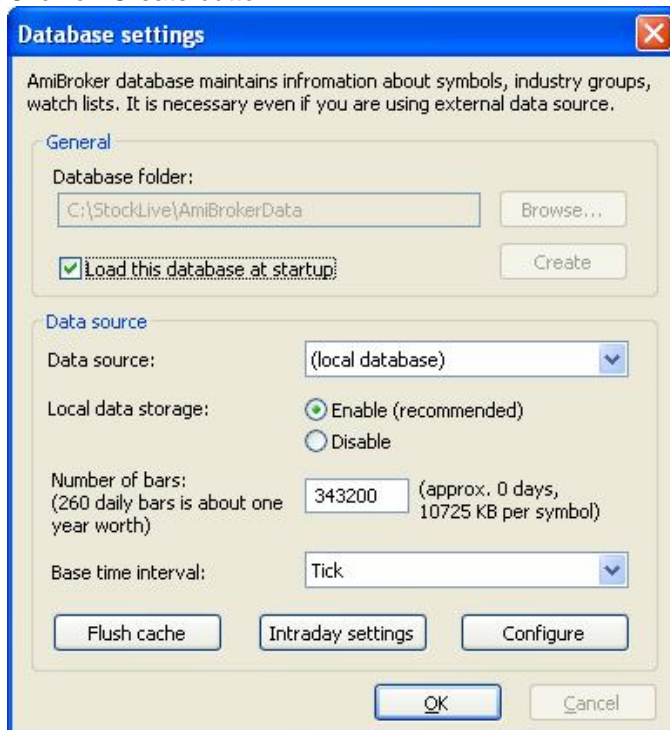
If above doesn't work for you, choose Option-B

Option-B

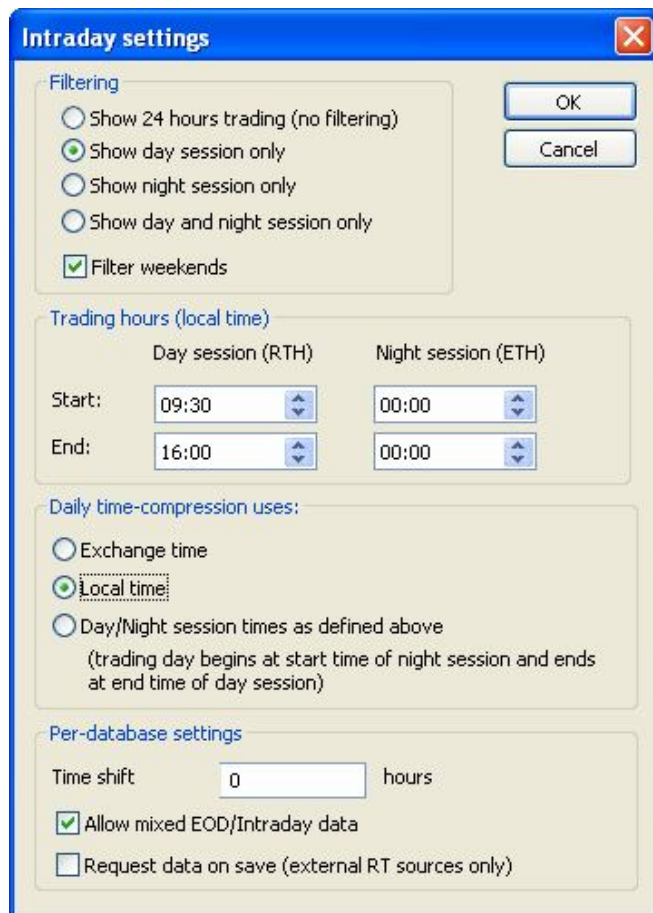
File Menu > New > Database



Click on Create button



Click on Intraday Settings



That's all done for Setting AmiBroker Database.

(3) Make sure that you don't get this error message "SORRY !!! Problem with COM DLL!!! AmiBroker related functionality will not be available without proper installation of this DLL" . If you get this error ,it means that C:\StockLive\prjdll.dll is not Registered . Follow below steps ::

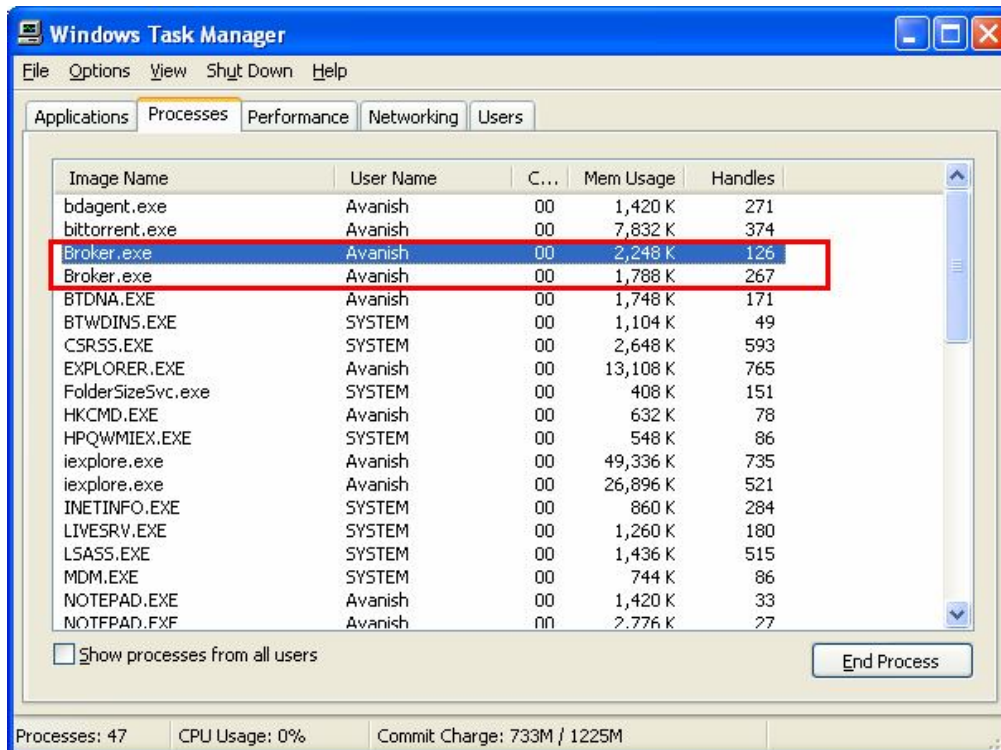
> Close both AmiBroker & Stock Live Pro .

> Start > Run ... Type "regsvr32 C:\StockLive\prjdll.dll" and press Return key .

> You will get message " DllRegisterServer in C:\StockLive\prjdll.dll succeeded"

Now you will not get the above error while starting Stock Live.

(4) Make sure that not more than one instance of AmiBroker running at a time.
You can check this with Task Manager .



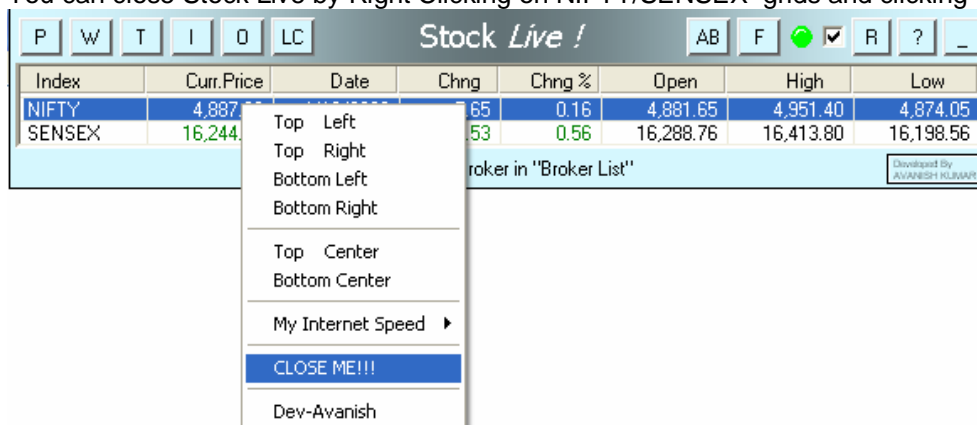
You can kill all instances of AmiBroker (Broker.exe) manually one by one from here or you can kill all instances at one go with

Kill All instances of Ami Broker

button in "AB" .

After killing all instances , Close all instances of Stock Live (if any) , then Start AmiBroker first and Stock Live after that .

You can close Stock Live by Right Clicking on NIFTY/SENSEX grids and clicking "Close Me"



(5) " Synchronize" All Stocks in Stock Live's Watchlist with that of AmiBroker by Clicking on

Synchronize

in "AB" . If all stocks are not added in AmiBroker Symbol , follow Step-4 above. Do remember that only NSE stocks are added in AmiBroker .

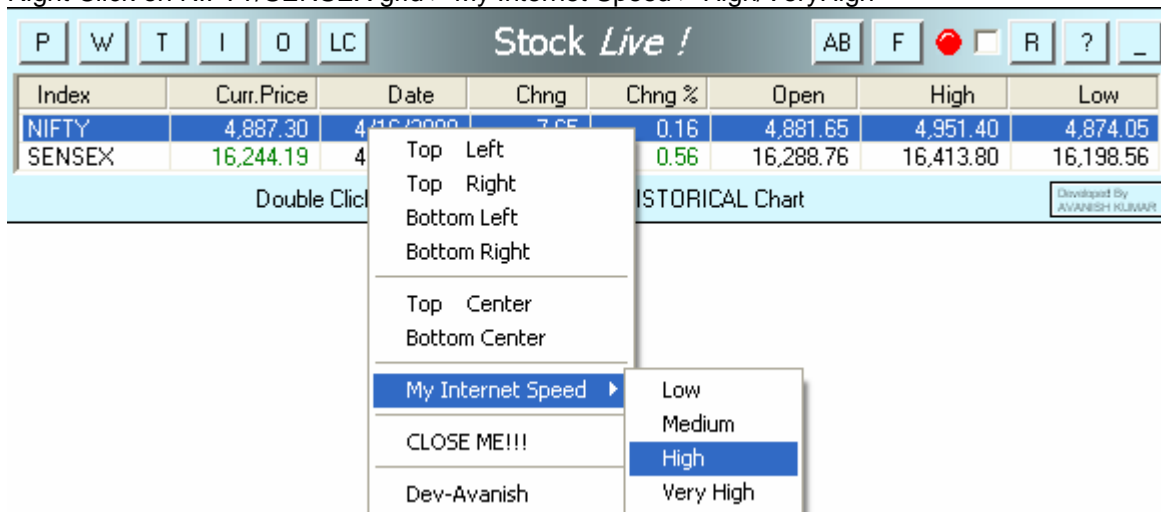
If you want to add any new stock in AmiBroker , first add it in StockLive's watchlist after Stopping "AB" only . Then in"AB" click again on Synchronize to get that Stock added in AmiBroker Symbol .

If you want to delete all old charts and start everything new . Click on Delete All and "Synchronize" again in "AB".

Delete All

Now **START** in "AB", to start Live Data feeding. Click on Close to close AB dialogue.

Right Click on NIFTY/SENSEX grid > My Internet Speed > High/VeryHigh



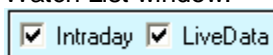
Do remember that though StockLive can feed data at 5sec interval but AmiBroker refreshes its chart only after 15 sec . So choose "High" here.

At least 3 data bars are required to draw a chart in AmiBroker , so you need to wait for at least 45 sec after you click on START in AB , before Charts in AmiBroker starts drawing.

Now you can HIDE Stock live from Tray Tool (Right Click at ICON) and concentrate only on AmiBroker see it drawing Live Charts.



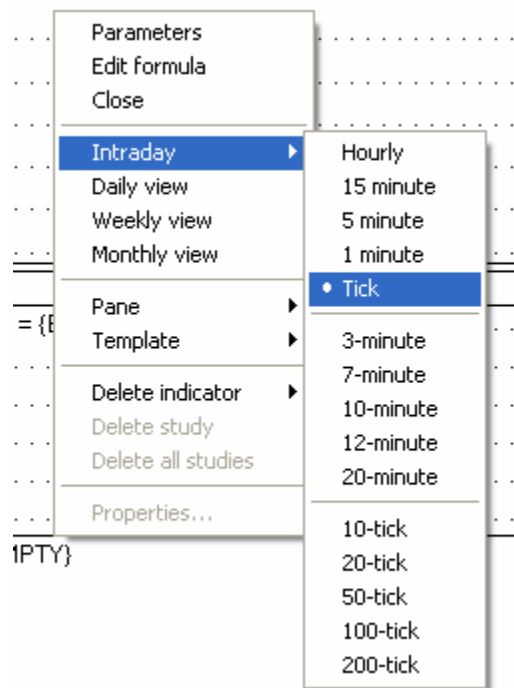
- (6) EOD, Intraday & Live Data are generated in C:\StockLive<Corresponding Folders>
EOD is generated automatically , but for Intraday & Live Data you need to Select the Check Boxes in Watch List window.



Each line in these data files are as ::
STOCKNAME,Date,Time,Open,High,Low,Close,Volume

These files can be opened in AmiBroker for Technical Analysis via File Menu > Import Wizard & Import ASCII

On AmiBroker Chart , RIGHT CLICK .



Make sure that Tick is selected there .

Finally you see below result , all Real Time LIVE charting in AmiBroker . You can see there Volume Bars in PINK colour.



Yahoo Finance Exchanges

STOCK Live ! : simplest Indian Stock Market monitoring software

This list presents all covered exchanges on Yahoo! Finance and their respective delay times.
(<http://finance.yahoo.com/exchanges>)

Country	Exchange	Suffix	Delay	Data Provider
United States of America	American Stock Exchange	N/A	20 min	Direct from Exchange
United States of America	Chicago Board of Trade	.CBT	10 min	Interactive Data Real-Time Services
United States of America	Chicago Mercantile Exchange	.CME	10 min	Interactive Data Real-Time Services
United States of America	NASDAQ Stock Exchange	N/A	15 min	Direct from Exchange
United States of America	New York Board of Trade	.NYB	30 min	Interactive Data Real-Time Services
United States of America	New York Commodities Exchange	.CMX	30 min	Interactive Data Real-Time Services
United States of America	New York Mercantile Exchange	.NYM	30 min	Interactive Data Real-Time Services
United States of America	New York Stock Exchange	N/A	20 min	Direct from Exchange
United States of America	OTC Bulletin Board Market	.OB	20 min	Direct from Exchange
United States of America	Pink Sheets	.PK	15 min	Direct from Exchange
Argentina	Buenos Aires Stock Exchange	.BA	30 min	Interactive Data Real-Time Services
Austria	Vienna Stock Exchange	.VI	15 min	Telekurs
Australia	Australian Stock Exchange	.AX	20 min	Interactive Data Real-Time Services
Brazil	Sao Paulo Stock Exchange	.SA	15 min	Interactive Data Real-Time Services
Canada	Toronto Stock Exchange	.TO	15 min	Interactive Data Real-Time Services
Canada	TSX Venture Exchange	.V	15 min	Interactive Data Real-Time Services
China	Shanghai Stock Exchange	.SS	30 min	Direct from Exchange
China	Shenzhen Stock Exchange	.SZ	30 min	Direct from Exchange
Denmark	Copenhagen Stock Exchange	.CO	15 min	Telekurs

France	Paris Stock Exchange	.PA	15 min	Telekurs
Germany	Berlin Stock Exchange	.BE	15 min	Telekurs
Germany	Bremen Stock Exchange	.BM	15 min	Telekurs
Germany	Dusseldorf Stock Exchange	.DU	15 min	Telekurs
Germany	Frankfurt Stock Exchange	.F	15 min	Telekurs
Germany	Hamburg Stock Exchange	.HM	15 min	Telekurs
Germany	Hanover Stock Exchange	.HA	15 min	Telekurs
Germany	Munich Stock Exchange	.MU	15 min	Telekurs
Germany	Stuttgart Stock Exchange	.SG	15 min	Telekurs
Germany	XETRA Stock Exchange	.DE	15 min	Telekurs
Hong Kong	Hong Kong Stock Exchange	.HK	15 min	Interactive Data Real-Time Services
India	Bombay Stock Exchange	.BO	15 min	Interactive Data Real-Time Services
India	National Stock Exchange of India	.NS	Real-time**	National Stock Exchange of India
Indonesia	Jakarta Stock Exchange	.JK	10 min	Interactive Data Real-Time Services
Israel	Tel Aviv Stock Exchange	.TA	20 min	Telekurs
Italy	Milan Stock Exchange	.MI	20 min	Telekurs
South Korea	Korea Stock Exchange	.KS	20 min	Interactive Data Real-Time Services
South Korea	KOSDAQ	.KQ	20 min	Interactive Data Real-Time Services
Mexico	Mexico Stock Exchange	.MX	20 min	Telekurs
Netherlands	Amsterdam Stock Exchange	.AS	15 min	Telekurs
New Zealand	New Zealand Stock Exchange	.NZ	20 min	Interactive Data Real-Time Services
Norway	Oslo Stock Exchange	.OL	15 min	Telekurs
Singapore	Singapore Stock Exchange	.SI	20 min	Interactive Data Real-Time Services
Spain	Barcelona Stock Exchange	.BC	15 min	Telekurs
Spain	Bilbao Stock Exchange	.BI	15 min	Telekurs
Spain	Madrid Fixed Income Market	.MF	15 min	Telekurs
Spain	Madrid SE C.A.T.S.	.MC	15 min	Telekurs
Spain	Madrid Stock Exchange	.MA	15 min	Telekurs

Sweden	Stockholm Stock Exchange	.ST	15 min	Telekurs
Switzerland	Swiss Exchange	.SW	30 min	Telekurs
Taiwan	Taiwan OTC Exchange	.TWO	20 min	Interactive Data Real-Time Services
Taiwan	Taiwan Stock Exchange	.TW	20 min	Interactive Data Real-Time Services
United Kingdom	London Stock Exchange	.L	20 min	Telekurs

For any other assistance , please drop a mail to **StockLive2008@gmail.com**.

Regards,
Stock Live
stocklive2008@gmail.com
www.avanishkumar.in
<http://finance.groups.yahoo.com/group/StockLiveUsers/>
Yahoo ID:: kumar.avanish