

Smart-X Software Solutions

SecReport User guide

Table of content:

<u>WELCOME</u>	3
FEATURES AND CAPABILITIES	4
MORE SYSTEM MANAGEMENT TOOLS	5
<u>REQUIREMENTS</u>	8
<u>INSTALLATION AND LICENSING</u>	9
EVALUATION VERSION LIMITATION	9
INSTALLATION	9
LICENSING	10
<u>WORKING WITH SECREPORT</u>	11
TOOLBAR	11
HOW TO CREATE A REPORT	12
QUICK REPORT	14



Chapter

Welcome

Welcome to Smart-X.

Thank you for choosing SecReport™, one of the top tools developed by Smart-X Software Solutions expert team in an effort to optimize your everyday work. SecReport helps you manage your system efficiently, effortlessly and productively.

This chapter describes the features and capabilities of SecReport, and lists additional tools in the same field that can help optimize your work environment.

For more tools, click on the link to visit our website at www.Smart-X.com.

This Chapter Contains:

- Features and Capabilities.
- More System Management tools.

Features and Capabilities

A number of the SecReport advantages are as follows:

- SecReport Easily generates NTFS security reports per directory.
- Generates NTFS security reports per directory and on all users of the Windows libraries.
- Useful for SOX reporting.
- Generates public folder reports in a single mouse click.
- Exports report to CSV file.

More System Management Tools

KillPol™

Extends your support ability in a policy restricted environment!

KillPol enables temporary disablement of Group Policy restrictions from a running user session without interrupting session continuity. Once your work is completed simply click 'Reapply Policy' to restore policy to original state.

KillPol Benefits:

- Shortens support time to end users
- Easily resolves troubleshoot Group Policy related problems
- Improve help desk efficiency.
- Ideal for Terminal Server / Citrix environments
- Can run from a central consul and remove policy restrictions remotely.
- Can run from within the user's session without the need to expose an icon to the end user, but rather by using a keyboard shortcut!
- Added support to Windows Vista and Windows Server 2008

Duplicate SID Monitor

Monitors your network for duplicate SIDs computers and easily resolves it from your own workstation.

Using computer images for OS deployment? Technicians forgot to run SYSPREP / NEWSID? You probably have hundreds of duplicate SID computers in your network!

Duplicate SID computers is a major security risk and might cause all kinds of difficulties when working with third party products such as Anti Virus, Deployment systems and other system products.

Duplicate SID Monitor (DSM) is a revolutionary product which constantly monitors your network to find computers with duplicate SIDs. The information is stored locally and enables administrators to query for duplicate SID computers and resolve it remotely with a single click.

DSM Benefits:

- Easily and quickly repairs malfunctions caused by years of incorrect deployment procedures
- Tightens security and fix one of the most common security threats in enterprise networks.
- Instantly provides a real view of duplicate SID computer on your network.
- Easily distribute new SIDs to remote computers with a single click.

Working with SecReport

This chapter provides explicit instructions on how to apply SecReport.

After reading the content carefully and following the prescribed steps you will find that SecReport is simple to operate.

This Chapter Contains:

I: Requirements.

II: Licensing and installation.

II: Working with SecReport.

Requirements

- CPU: Pentium II or higher.
- RAM: 384 MB or more.
- OS: Windows XP or higher.
- Framework: Microsoft Dot Net Framework 2.0 sp1.

Installation and Licensing

Evaluation version limitation

The product you have downloaded to your PC is an evaluation version. The SecReport evaluation version has limited functionality and duration (as explained in the EULA).

Installation

It is recommended to install the program on the system administrator's workstation or the file server itself (for better performance during report generation)

To install SecReport from a downloaded file:

1. Double click the installation SecReportSetup.msi file.
2. Read the program license conditions carefully.
3. Choose the directory where you wish to install SecReport.
4. Follow the instructions by the Setup program displayed on the screen until you receive the message "Smart-x SecReport has been successfully installed".
5. A desktop icon of the SecReport will be placed on the desktop and in the start menu. In addition, a new command named 'Scan with SmartX SecReport' will be added to the shell context menu.

Licensing

SecReport is licensed per workstation, as a license should be purchased for each workstation running SecReport.

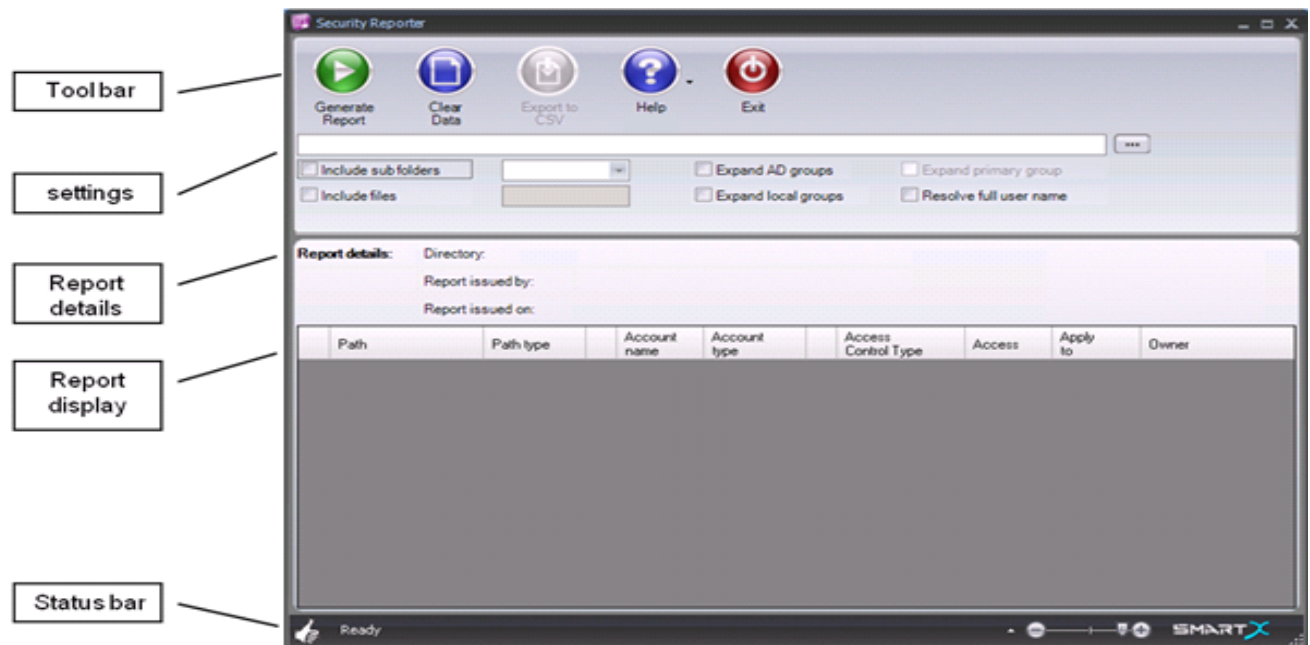
When you double click on the application, you will see a license window from which you can either 'Open' the program or set license file.

- If you choose the '**Set license**' option, browse to choose the license file, and complete the process.
- Pressing on '**Continue**' will run the application.
- If you press on 'Buy Now' you will reach the SecReport web page on the Smart - X web site where you can purchase the tool.









Working with SecReport

Main window



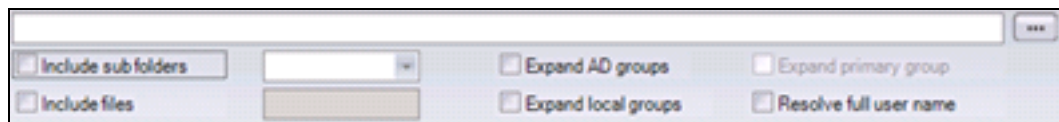
Toolbar

Icon	Name	Description
	Generate report	Starts the report generation.
	Stop	Stops report generation
	Reset Report	Clears settings.

Icon	Name	Description
	Export to CSV	Exports the report data to a CSV file. (Can be opened in Excel)
	Help	Opens sub-menu that contains information 'About' SecReport, Legal information and Checks for new versions.
	Exit	Exits the program

How to create a report

- 1) Define the report parameters by filling the appropriate data in the settings section.



A screenshot of a software settings window. It features a search bar at the top right. Below it, there are two rows of settings. The first row includes a checkbox for 'Include sub folders', a dropdown menu, a checkbox for 'Expand AD groups', and a checkbox for 'Expand primary group'. The second row includes a checkbox for 'Include files', another dropdown menu, a checkbox for 'Expand local groups', and a checkbox for 'Resolve full user name'.

Settings
<div> <input type="text"/> <input type="button" value="..."/> </div> <p>Purpose: Define the directory on which the report will run.</p> <p>Usage: Type the directory or browse to choose one.</p>
<div> <input type="checkbox"/> Include sub folders <div> <input type="text"/> <input type="button" value="v"/> </div> </div> <p>Purpose: Define whether the report will run recursively on subfolders under the root directory or on the root folder solely.</p>

Settings
<p>Usage: Check the box to include sub directories and choose the depth level.</p>
<div> <input type="checkbox"/> Include files </div> <p>Purpose: Define whether the report will display security information for existing files in the chosen directory. Note that generating a report using this feature will take much longer.</p> <p>Usage: Check the box to include files then type the file name and extension. For example: *.* for any file type and name.</p>
<div> <input type="checkbox"/> Expand AD groups </div> <p>Purpose: In addition to Active Directory group names, each member of the Active Directory group will also be displayed in the report as well as the group itself.</p> <p>Usage: Check the box to expand AD groups.</p>
<div> <input type="checkbox"/> Expand local groups </div> <p>Purpose: In addition to local group names, each member of the local groups will be displayed in the report as well as the group itself.</p> <p>Usage: Check the box to expand local groups.</p>
<div> <input type="checkbox"/> Expand primary group </div> <p>Purpose: Define whether the report will display detailed security information for expanded Active Directory primary group (Usually 'Domain Users' group)</p> <p>Note that generating a report using this feature will take much longer.</p> <p>Usage: Check the box to expand AD primary group (available only after checking the 'Expand AD groups').</p>
<div> <input type="checkbox"/> Resolve full user name </div> <p>Purpose: Define whether the report will display full user name or the SAM Account Name only.</p> <p>Usage: Check the box to show user name.</p>

2) Click Enter on the keyboard **OR** on '**Generate report**' icon  to create the report.

- You may export the report details to a CSV file by clicking on the



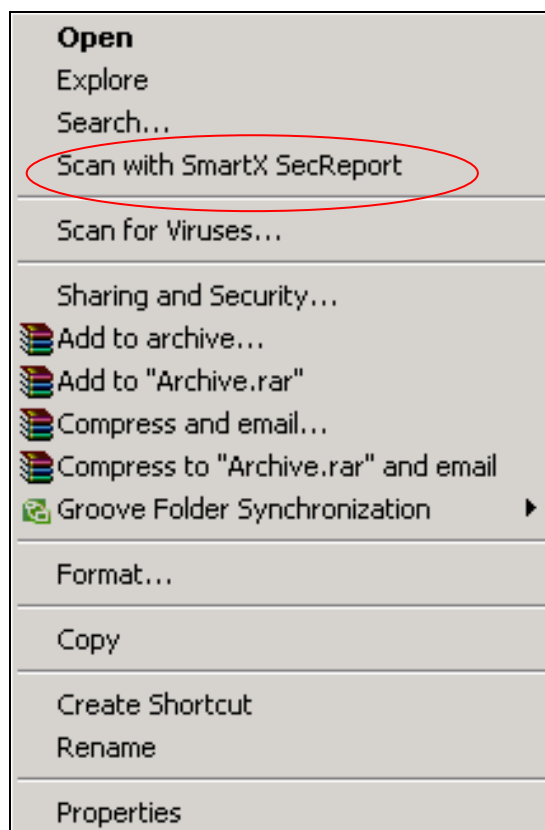
- To reset the report result and configuration click on the 'Clear Data'



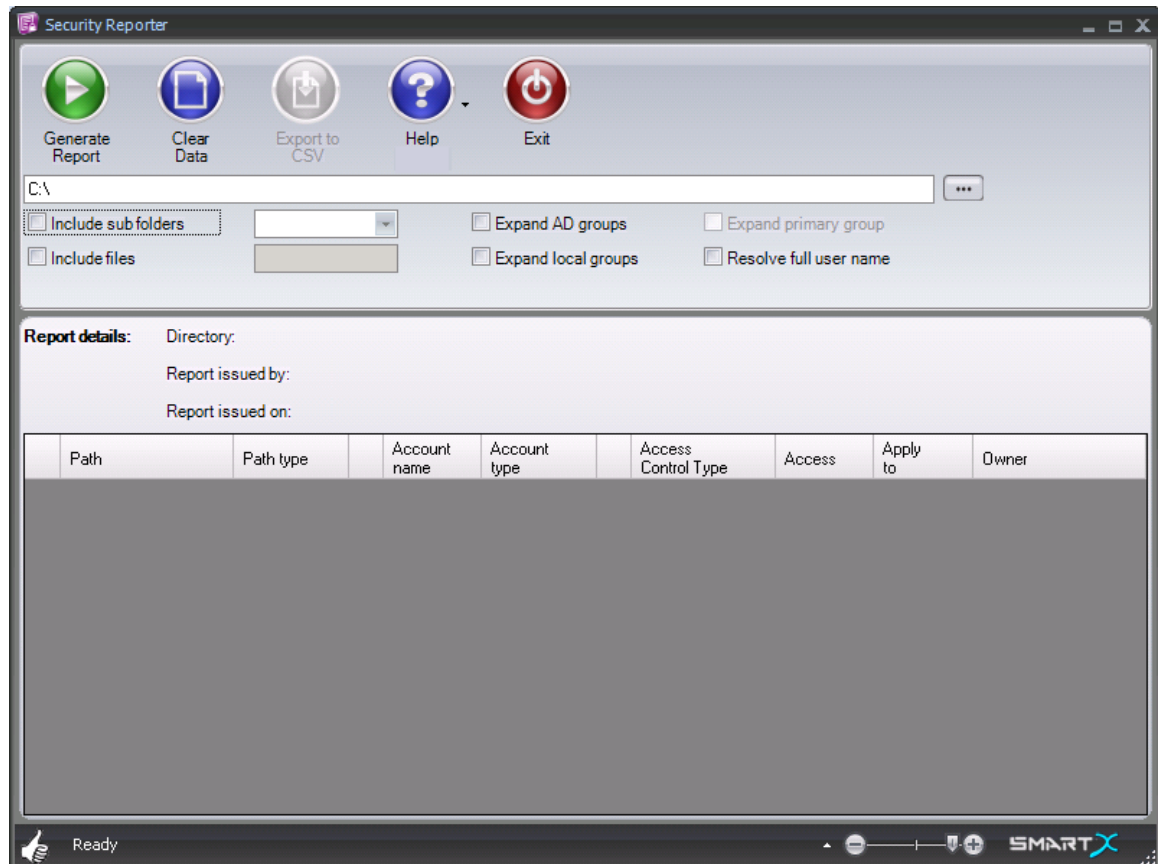
Quick Report

SecReport offers a quick way to create a report.

- Right click on a chosen directory.
- Click on 'Scan with SmartX SecReport'.



3. The SecReport program will be opened with the chosen directory in the appropriate field.



4. Now simply set your report parameters and run the report by

clicking  .