

A decorative graphic consisting of three blue, 3D-rendered spheres of different sizes. Two smaller spheres are positioned in the upper right quadrant, with thin blue lines connecting them to a larger sphere in the lower right quadrant. The spheres have a light blue top and a darker blue bottom, giving them a three-dimensional appearance.

Search Text in Database

A tool that search for text or keyword in a SQL database.

This tool searches all columns in all tables in a database for string keyword.

SQLMgmt.com

1. Prerequisite

The following components are required to run this tool properly.

- .NET Framework 4.0
- SMO (SQL Server 2008 SQL Management Objects)

2. What is this tool about?

This tool helps you to search all columns of all tables in a database for a string keyword. In order to increase performance, it examines string type columns only in all tables to search for a given keyword.

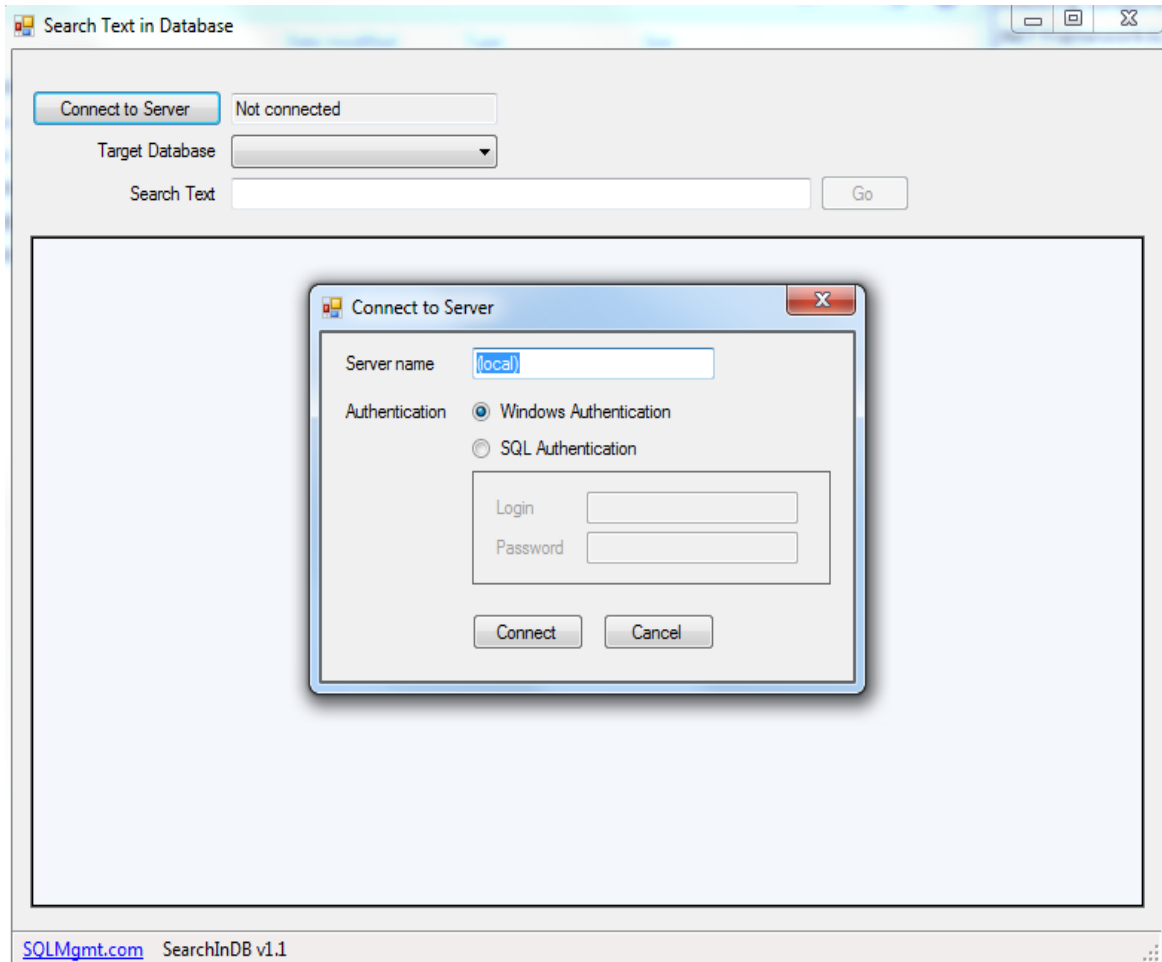
When user wants to search for any substring in SQL database, you can simply use this tool and search that in the whole database. All tables will be searched and show you Table, Column, primary key of the row and actual text content of the column.

3. How to install

- Download and unzip.
- If you already have SQL Server 2008 SQL Management Object (SMO) on your machine, simply run .EXE file.
- If you don't have SMO, you need to install Microsoft SQL Server 2008 Management Objects (SharedManagementObjects.msi) from Microsoft web site (This is free redistribution package).

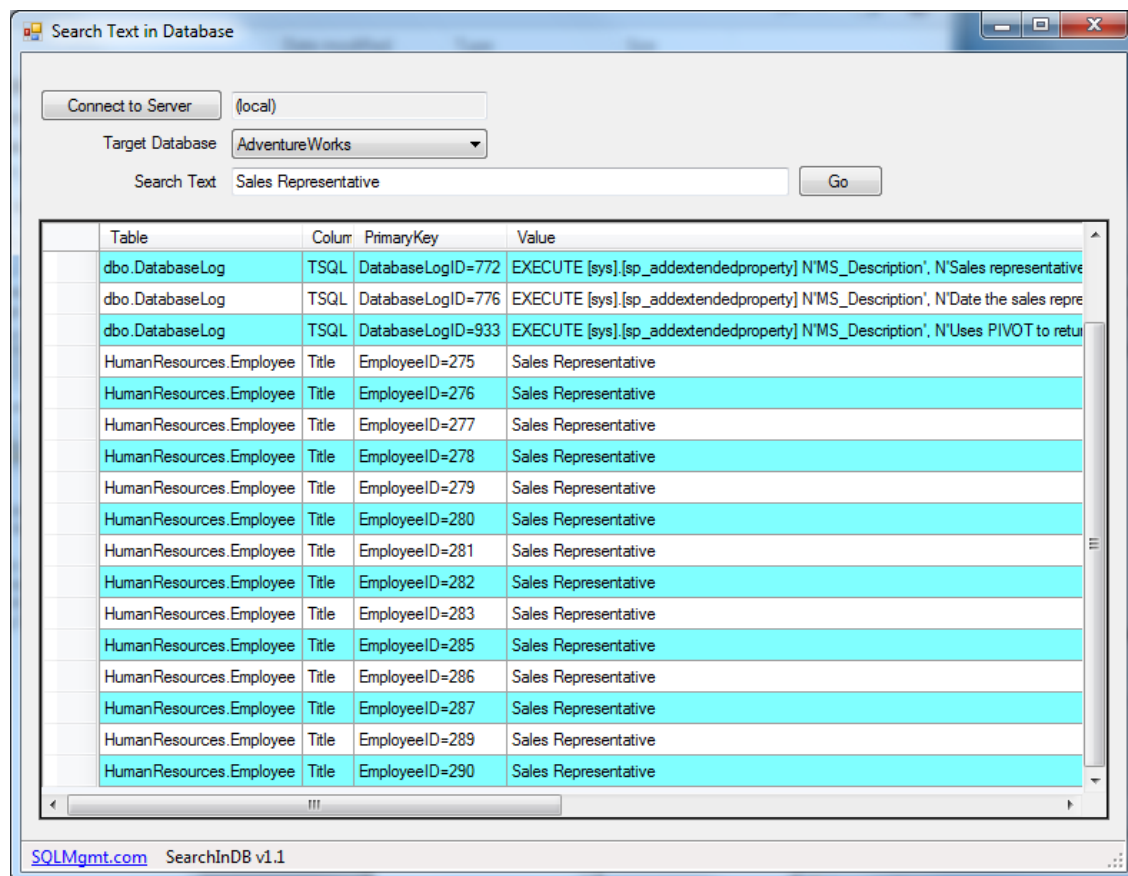
4. How to use

- Run SearchInDB.exe
- Click [Connect to Server] button. Connection dialog will show as you see below.



- Type [Server name].
- If you are using SQL Authentication, select [SQL Authentication] and enter Login and Password.
- Click [Connect].

- Select [Target Database]
- Type any string you want to search
- Click [Go]



- Search progress will be started. During in progress, progress bar will be shown at the status bar and [Go] button will be disabled.
- Once search is done, the application will show the result in the grid.