

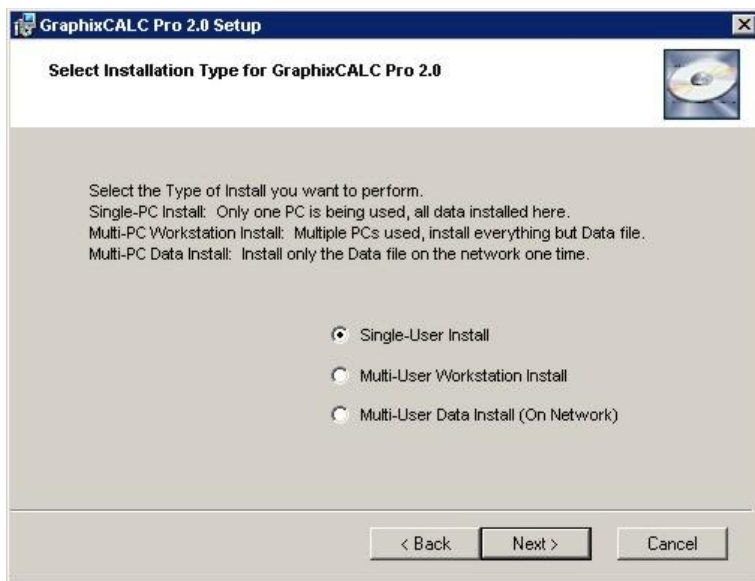
# Installation & Activation

---

## Installation

### **Single Workstation Install Information**

Simply follow the prompts. When you are presented with the 'Select Installation Type' screen, it is important to understand the differences. For most users with a single PC installation, choose the 'Single-User Install' option. This will install all needed files on the computer.

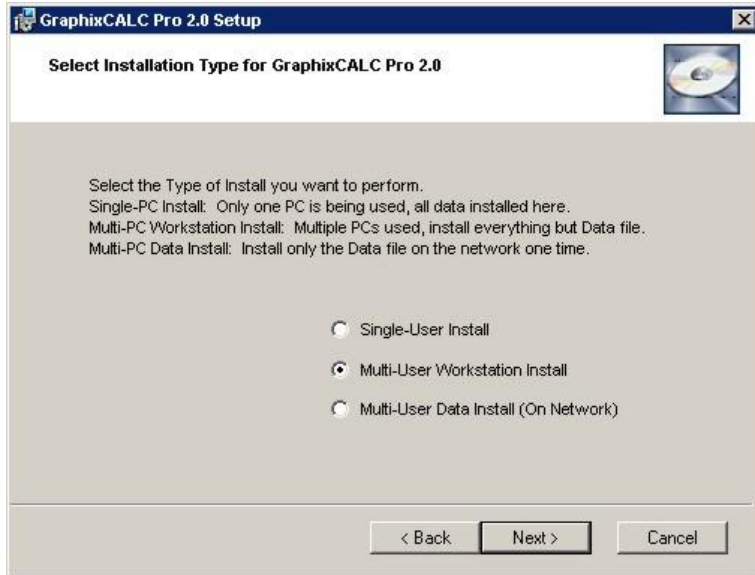


### **Network Install Information**

Two options are available... 'Multi-User Workstation' and 'Multi-User Data Install'. First, you need to understand how GraphixCALC Pro is created. It is comprised of two primary program files (with several other support files). The files are called 'GraphixCALC.accde' and 'GraphixCALC\_Data.accdb'. If you understand MS Access, you will likely know what these files are. The ACCDE file is the user interface, and the ACCDB file is where all of the data is stored in the database.

If you plan to install the software on multiple workstations and a server (for central file accessibility), then choose 'Multi-User Workstation' and install on each workstation. You can then install on the server using the 'Multi-User Data Install' option. NOTE: You must be logged directly into the server with the appropriate administrative rights for this to work properly. You cannot be remotely logged into the server from a workstation that you have already installed the software on, or the installation will only allow you to 'Repair' or 'Remove' subsequent installations.

# GraphixCALC Pro 2.0 ReadMe



One other option is available for a network installation, which actually may be the simplest. This will require some simple file manipulation. For this option, first choose the 'Single-User Install' option on one of the workstations. On subsequent workstations, choose the 'Multi-User Workstation' option. No 'Multi-User Data Install' option is needed. After successful installation, navigate to the installation directory.

For Windows XP/2000, the default directory is (and is hidden by default): **C:\Documents and Settings\All Users\Application Data\GraphixCALC Software\GraphixCALC Pro 2.0**

For Windows Vista, the default directory is: **C:\ProgramData\GraphixCALC Software\GraphixCALC Pro 2.0**

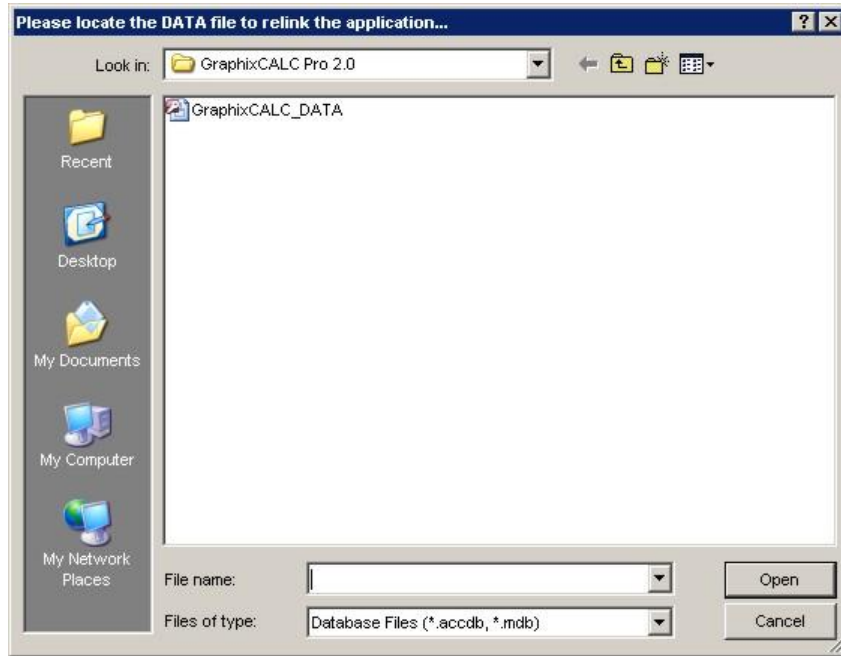
The default directory will be assumed, but the process is the same regardless of the directory chosen. Find the file called 'GraphixCALC\_DATA.accdb' as shown.



Select the indicated file, then MOVE it (do not copy it) to the shared folder of your choosing.

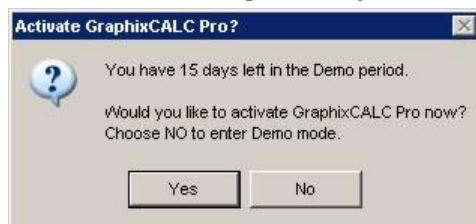
# GraphixCALC Pro 2.0 ReadMe

Start GraphixCALC Pro and you will be presented with the following screen. Navigate to the shared directory that you either (a) installed onto a server or (b) moved the ACCDB file to. The software will relink the database file and continue to load. Repeat this process with each workstation that the software was installed on. You will only need to perform this operation the first time you run GraphixCALC Pro or if you move the ACCDB file to an alternate location.



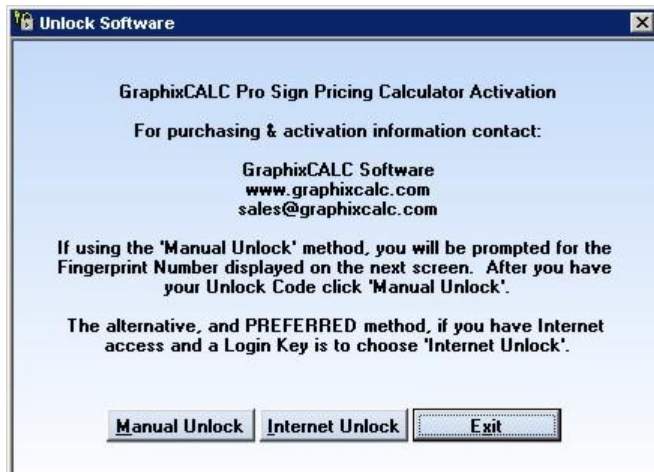
## **Activation Information**

When you first start GraphixCALC Pro, you are presented with an Activation window which indicates how many days are remaining in the Demo version. The Demo version is fully functioning, but time-limited. If you choose NO, you will be presented with this window until the Demo expires or you activate the software.



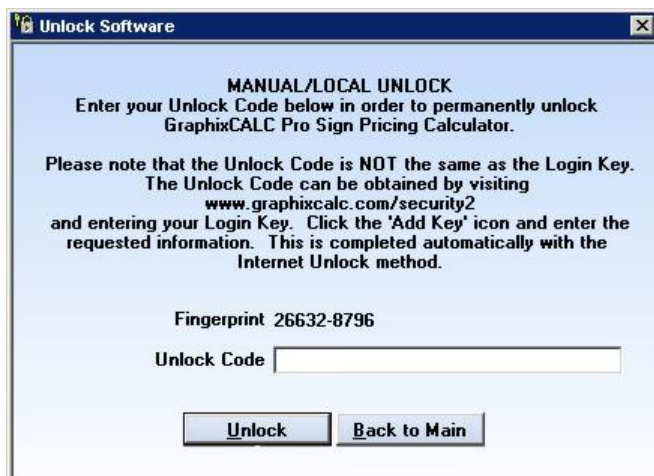
If you click YES, you are then presented with additional screens. The first screen is the main Unlock screen. You have three options: Manual Unlock, Internet Unlock or Exit.

# GraphixCALC Pro 2.0 ReadMe



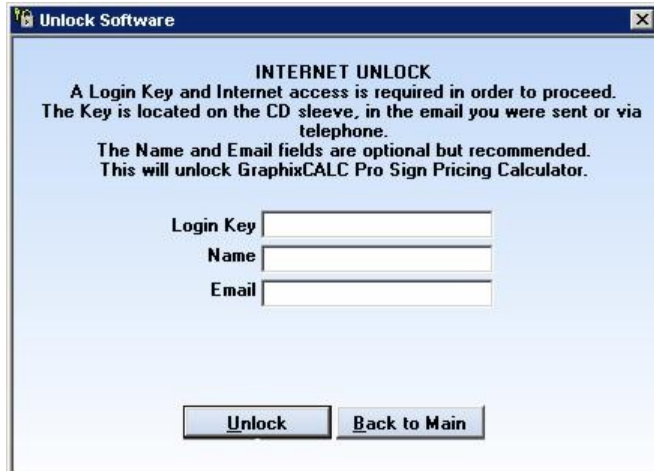
**Manual Unlock:** As the screen indicates, you will be prompted for the Fingerprint ID which is a number specific to the machine being installed on. In order to activate the software, you must enter a valid Unlock Code which is obtained by contacting us either by phone or email. Alternately, if a password was provided then you can visit a secure portion of the GraphixCALC website and generate your Unlock Code(s) there:

[www.graphixcalc.com/security2](http://www.graphixcalc.com/security2)



**Internet Unlock:** *This is the preferred method for unlocking the software.* Enter the provided Login Key. Name and Email address are optional but encouraged for any future support purposes. An active internet connection is required for this method. You may have to temporarily disable your firewall as this sometimes interferes with the unlock process. Specifically, you must allow the file "skrev.exe" to access the internet.

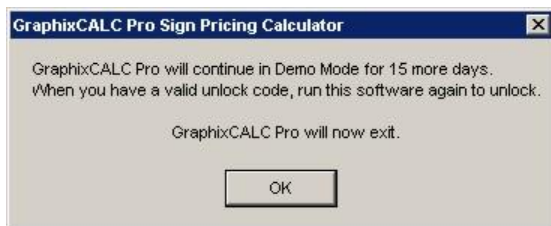
# GraphixCALC Pro 2.0 ReadMe



You will see the following screen upon successful activation.



**Exit:** You are presented with a screen specifying the number of Demo days remaining and then the program exits. It then reverts back to Demo mode until you successfully unlock the software or the Demo expires.



Primary GraphixCALC website: [www.graphixcalc.com](http://www.graphixcalc.com)

Password Protected GraphixCALC webpage (for obtaining your own Unlock Code(s)):  
[www.graphixcalc.com/security2](http://www.graphixcalc.com/security2)

Request an unlock code via email (please provide your Fingerprint ID and purchase information): [unlock@graphixcalc.com](mailto:unlock@graphixcalc.com)