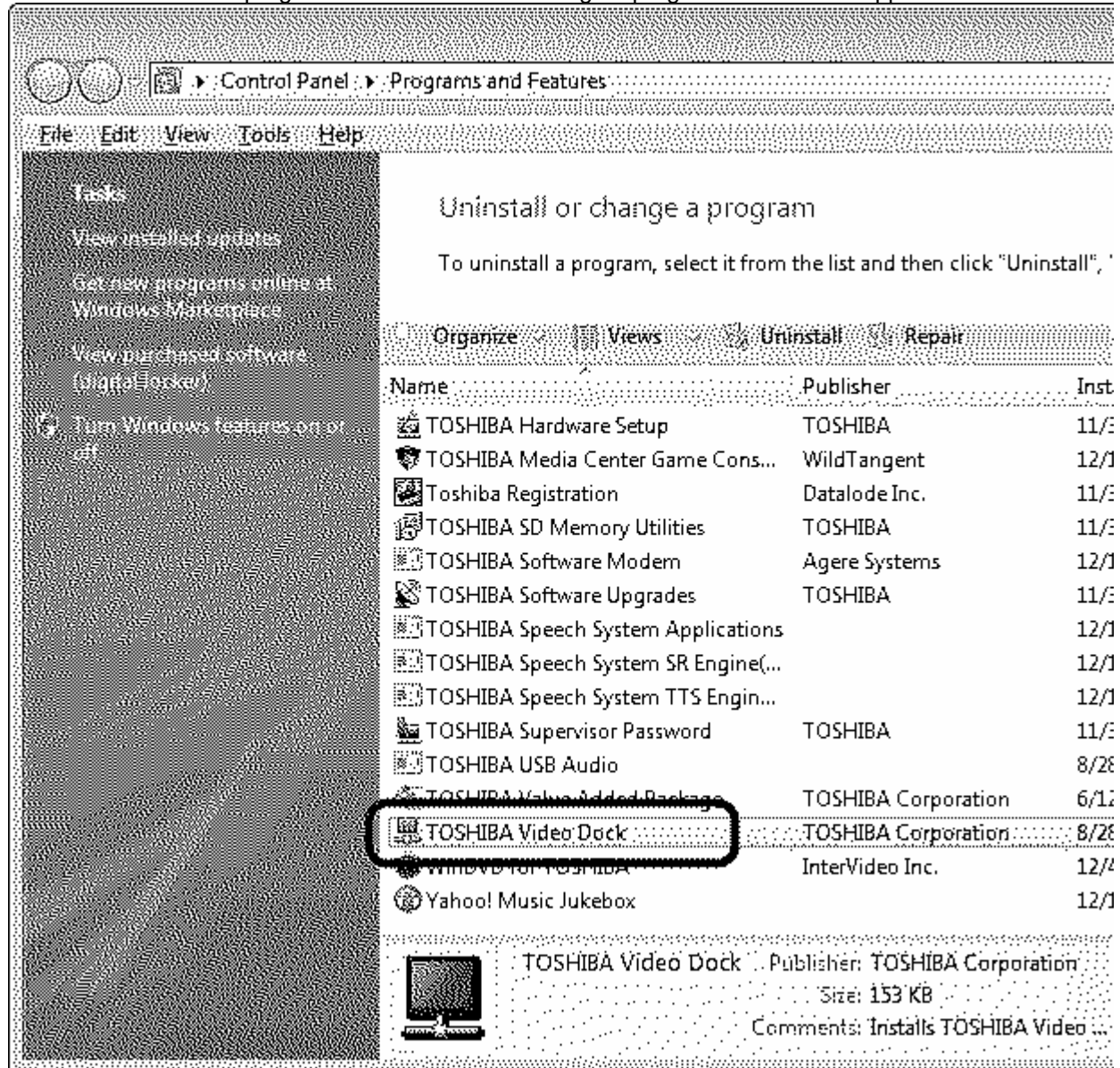


How to update the driver

Older version of the driver must be uninstalled prior to the Audio driver update.

1. How to uninstall older version of Video driver;

1. Click Start and then Control Panel.
2. Click Programs and Features.
3. Click Uninstall a program. The "Uninstall or change a program" window will appear.



NOTE: If you do not see the TOSHIBA Video Dock file skip to "How to install the new version of Audio driver" section.

4. Select TOSHIBA Video Dock and then click "Uninstall".
5. Follow the on screen instructions to finish uninstalling the Video driver.
6. Restart your computer. You are now ready to retrieve and install the updated audio driver.

How to install the new version of Video driver

1. Connect the dynadock to your computer.
2. Uncompress the attached file to any convenient folder.
3. Run Setup.exe from the folder.
4. Follow the on screen instructions to complete the installation.

5. When the following screen appears, click "Finish" to restart the computer.
This will complete the Video driver update.

-- How to check the version of Video driver --

1. From [Start] --> [Control Panel] --> [Programs and Features] --> Click [TOSHIBA Video Dock]
2. Select [Organize] --> [Layout] --> [Details Pane]
3. The version is appeared as following image.

