

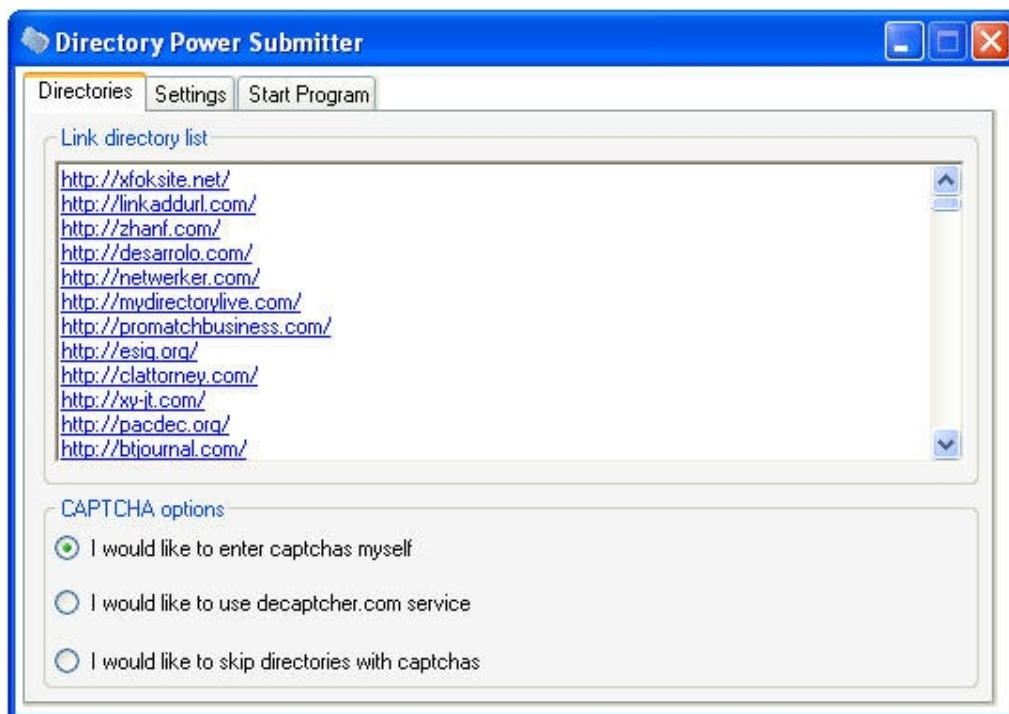
PhpLD power submitter instructions.

Thank you for buying PhpLD Power Submitter. In this file I will write a short instructions about how to use this program.

This program automatically submits links to phpLD link directories. No other web directory script is supported.

To start a program open file named phpLD_submitter.exe. If you get errors you probably dont have the latest NET framework (3.5 is OK) installed on your PC.

When you will open the program you will see application with 3 tabs.



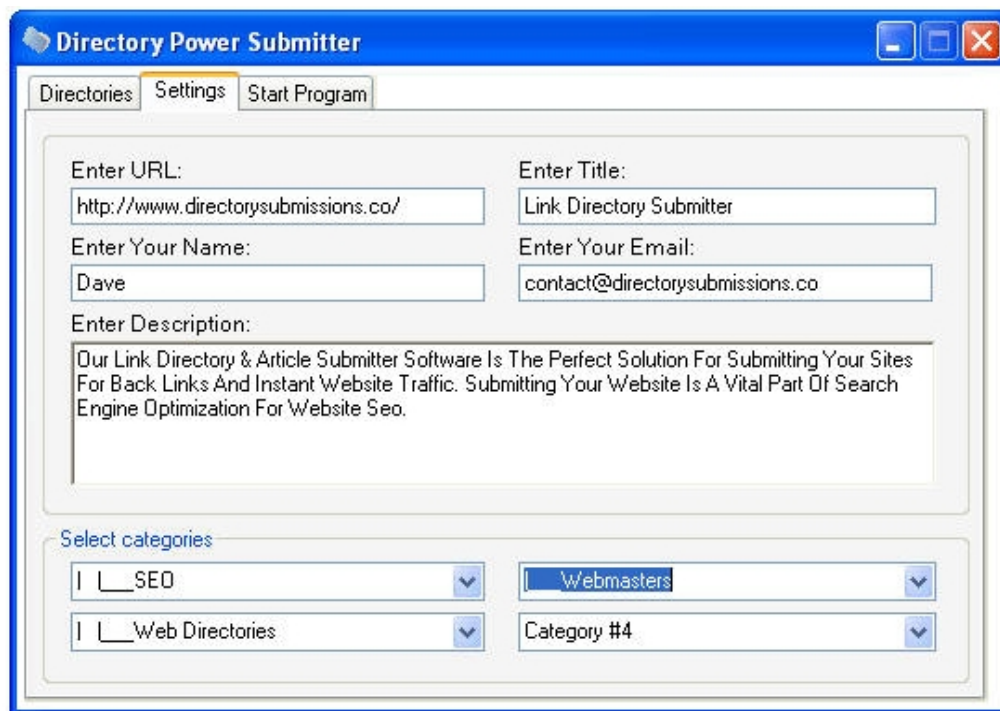
Directories Tab contains text box where you can see which of the directories will be used in program. The directory links are loaded from directories.txt file so If you would like to change default directories list, edit directories.txt file.

Captcha Options - Many of the directories are CAPTCHA protected so I have made options to bypass these protections.

Nothing complicated about this part. If you would like to skip CAPTCHA protected, select I would like to skip directories with captchas.

The decaptcha.com feature is disabled because the service has discontinued.

You may also enter captchas yourself by selecting "I would like to enter captchas myself"



The screenshot shows the 'Directory Power Submitter' application window. It has a blue title bar and three tabs: 'Directories', 'Settings', and 'Start Program'. The 'Settings' tab is active. The form contains the following fields:

- Enter URL:**
- Enter Title:**
- Enter Your Name:**
- Enter Your Email:**
- Enter Description:**

Below the description field, there is a section titled 'Select categories' with four dropdown menus:

- ☐ ☐ SEO
- ☐ Web Directories
- ☐ Webmasters
- ☐ Category #4

In Settings Tab - You need to fill multiple fields about website you are going to promote – URL, Title, Description and your name and email. All of these fields allow sentence mixing.

Separate multiple sentences with two pipes (| |) and multiple words in brackets with one pipe (|)

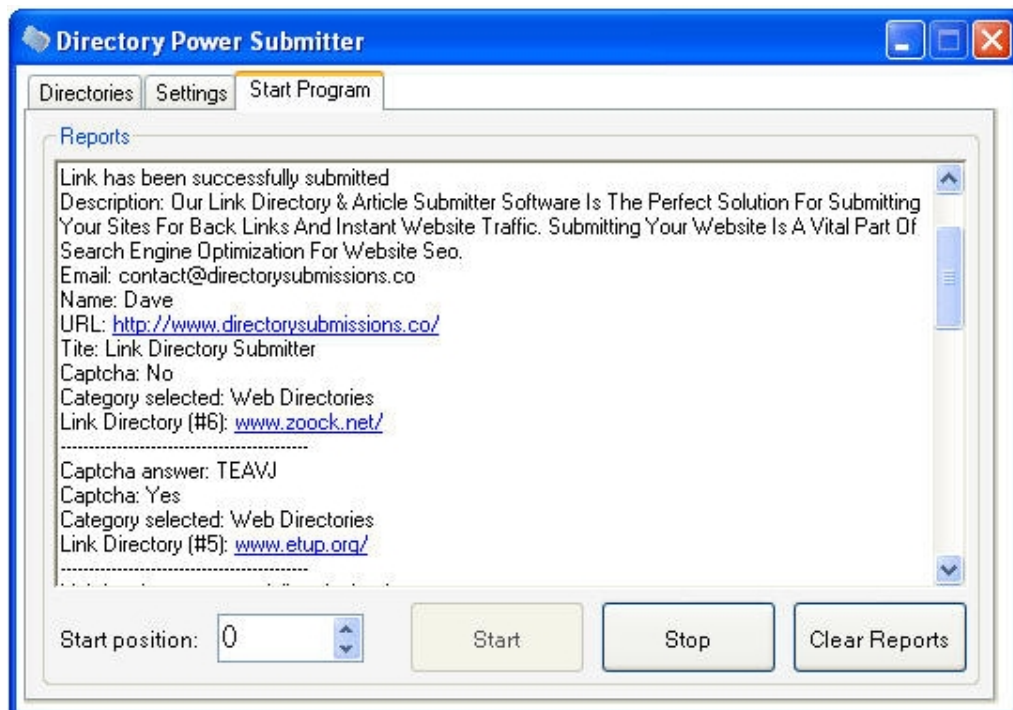
Here is example:

Learn how to get six pack abs|{|Health}Fitness|Health and fitness} solutions suitable for everybody

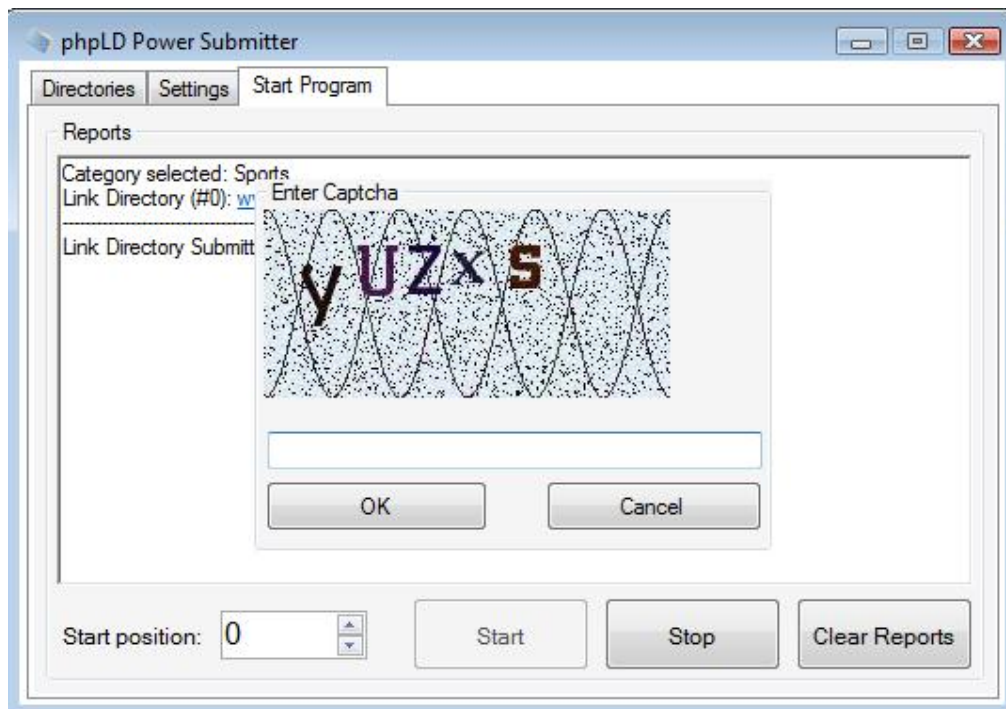
Will randomly choose one of these

- Learn how to get six pack abs
- Health and fitness solutions suitable for everybody
- Health solutions suitable for everybody
- Fitness solutions suitable for everybody

At the bottom of tab you will need to select categories. Try to fill all four categories. You can also enter categories yourself.



The Start Program Tab all you need to do is enter start position and click start to begin submissions. If you want to start for example from the 3rd directory from list, not the first one, change start position to 2(Counting starts from zero). When you stop program and want to start it from where it finished, change this position. You will see the current position in reports.



If you have selected - I would like to enter captchas myself option at the directories tab, then you will need to enter captchs yourself. Enter them under the displayed captcha and press enter or click OK.

Thank You!

DirectorySubmissions.co

[Click Here To Visit Us](#)