

# **Abraxas Passwords Version 1.5**

By onechicagoplace.com

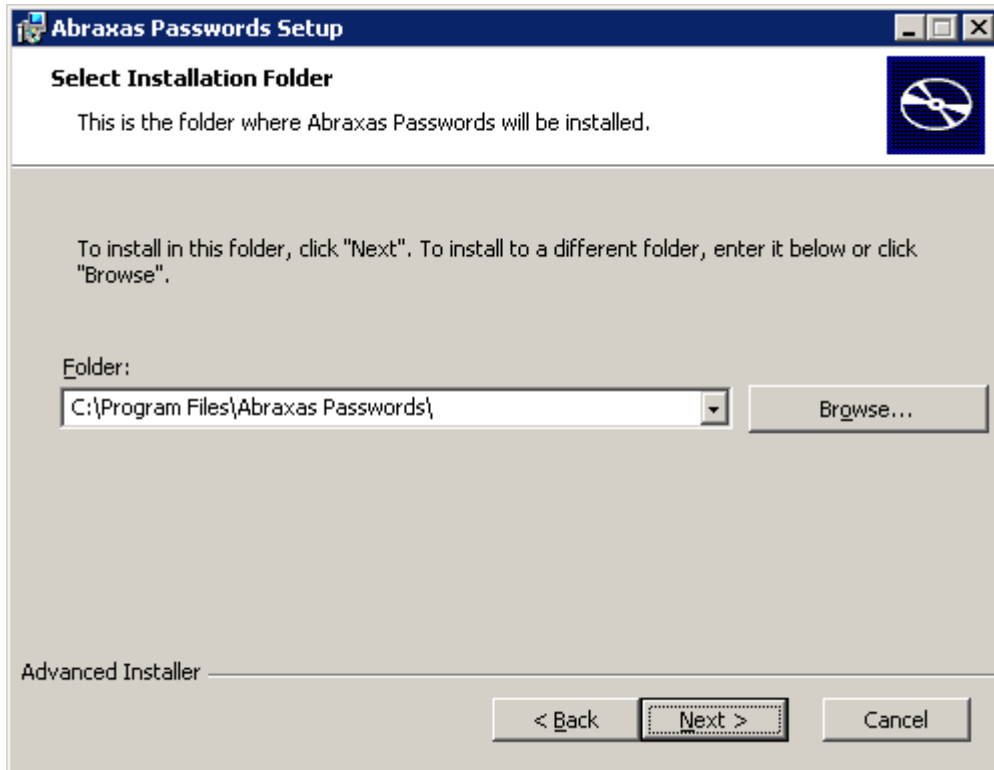
## **Installing Abraxas Passwords**

To install the application, please run the file Abraxas Passwords v1.5.msi.

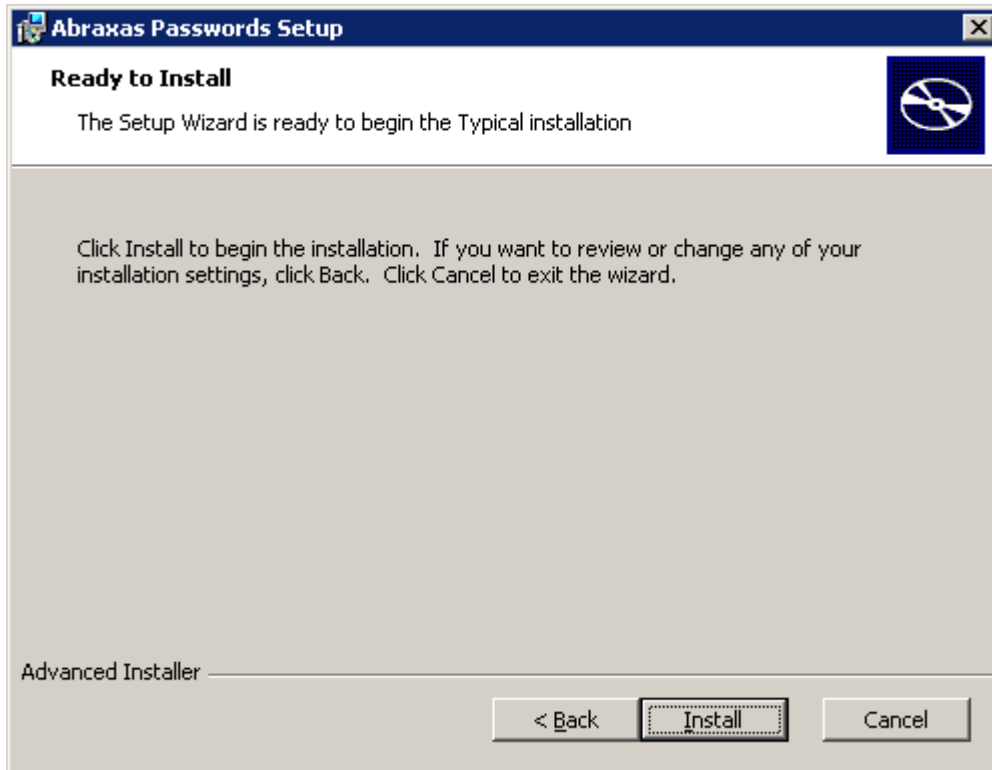
A welcome screen will appear.  
Click Next to continue.



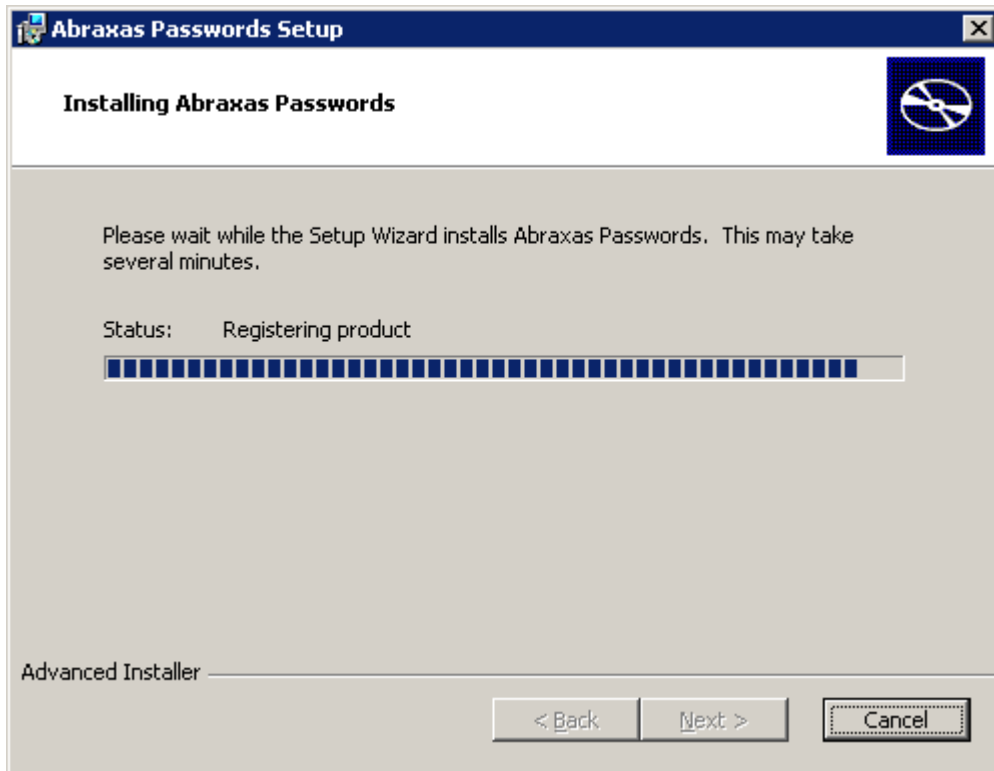
Choose your installation folder.  
Click Next to continue.



If you have changes, click Back to return to the previous screen. Otherwise, click Next to continue.



The install should only take a few seconds.

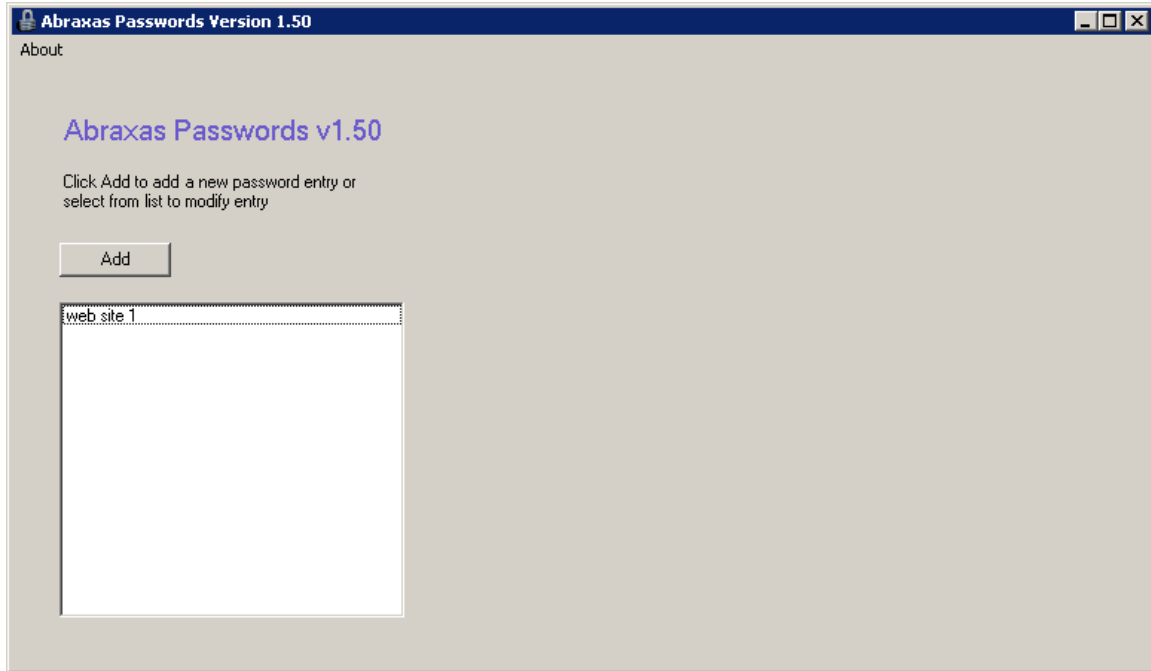


If you see this screen, you have successfully installed Abraxas Passwords. Click Finish to exit setup.



## Using Abraxas Passwords

Click on the Abraxas Passwords shortcut on your desktop, or select Abraxas Passwords from your Start Menu.



You can add new password entries by clicking Add. A screen with empty fields will appear. Enter in your information and click Save.

Please note Quick Label needs to be unique and User Name / ID and Password are all required fields. Click Cancel if you do not wish to save.

The screenshot shows the 'Abraxas Passwords Version 1.50' application window. The title bar includes the application name and version, and standard window controls. The main window has a light gray background. On the left, there is a section titled 'About' with the text 'Abraxas Passwords v1.50' and instructions: 'Click Add to add a new password entry or select from list to modify entry'. Below this is an 'Add' button. Underneath the button is a list box containing the entry 'web site 1'. On the right side of the window is a 'Detail Information' panel. This panel contains several text input fields: 'Quick Label:', 'Description:', 'Web Site:', 'User Name / ID:', 'Password:', and 'Old Password:'. The 'Old Password' field has the placeholder text 'Old password if any'. At the bottom of the 'Detail Information' panel are two buttons: 'Save' and 'Cancel - No Save'.

Abraxas Passwords Version 1.50

About

**Abraxas Passwords v1.50**

Click Add to add a new password entry or select from list to modify entry

Add

web site 1

Detail Information

Quick Label:

Description:

Web Site:

User Name / ID:

Password:

Old Password:

Save Cancel - No Save

You can modify saved password entries by selecting the Quick Label item from the list. The saved information will appear in the text boxes. You can now change the information as needed. Click Save to update the information or Cancel to skip saving any changes.

Quick Label cannot be modified as it is a primary key. User Name / ID and Password are all required fields. Click Cancel if you do not wish to save.

The screenshot shows the 'Abraxas Passwords Version 1.50' application window. The title bar includes the application name and version, and standard window controls. The main window is divided into two main sections. On the left, there is a section titled 'About' with the text 'Abraxas Passwords v1.50' and instructions: 'Click Add to add a new password entry or select from list to modify entry'. Below this is an 'Add' button and a list box containing the entry 'web site 1'. On the right, there is a 'Detail Information' form. This form contains several text input fields: 'Quick Label' (containing 'web site 1'), 'Description' (containing 'web site 1 additional notes'), 'Web Site' (containing 'http://www.website1.com'), 'User Name / ID' (containing 'webuser'), 'Password' (containing 'password'), and 'Old Password' (containing 'oldpassword'). At the bottom of the form are three buttons: 'Save', 'Cancel - No Save', and 'Delete'.

Abraxas Passwords Version 1.50

About

**Abraxas Passwords v1.50**

Click Add to add a new password entry or select from list to modify entry

Add

web site 1

Detail Information

Quick Label: web site 1

Description: web site 1 additional notes

Web Site: http://www.website1.com

User Name / ID: webuser

Password: password

Old Password: oldpassword

Save Cancel - No Save Delete



## Uninstall Abraxas Passwords

You can uninstall Abraxas Passwords by going to Control Panel → Add and Remove Programs.

